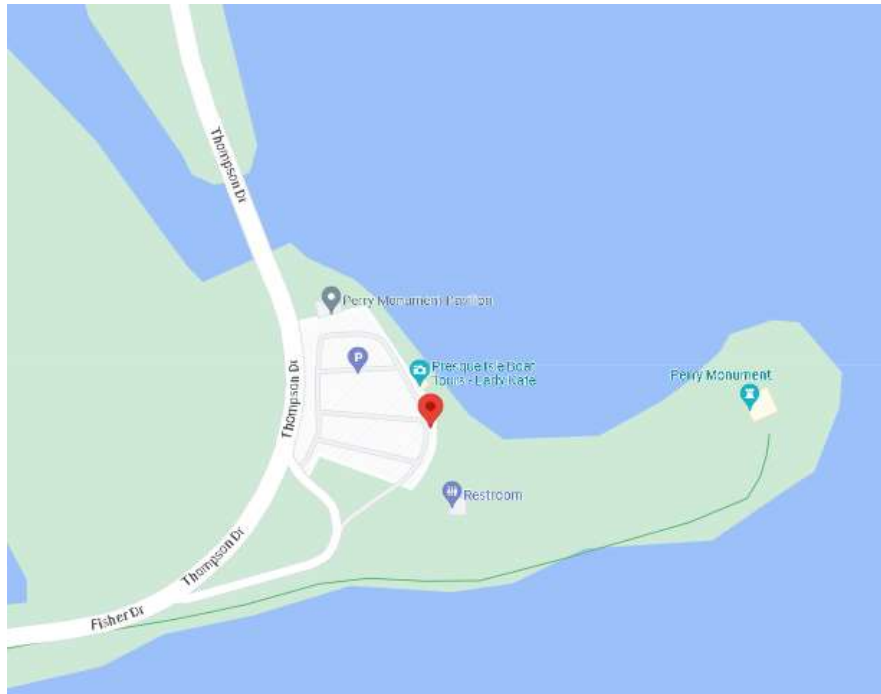


1. Perry Monument Presque Isle Peninsula, Erie, PA _____	2
2. Niagara Falls Either side, New York, or Ontario _____	4
3. Whiteface Mountain Summit, Lake Placid, NY _____	6
4. Ferry across Lake Champlain, The Essex NY to Charlotte, VT _____	8
5. Kancamagus Scenic Byway, RT 112 Lincoln, NH to Bartlett, NH _____	11
6. Cabot Trail Cape Breton Island, Nova Scotia HWY 19 _____	14
7. Four Corners Park, Madawaska, Maine _____	17
8. Quebec City or Montreal, the walled cities _____	19
9. The Giant Canadian Nickel at the Dynamic Earth Science Museum, 122 Big Nickel Mine Road, Sudbury, Ontario _____	22
10. Kakabeka Falls, TC11 20 miles west of Thunder Bay Ont _____	24
11. SplitRock Lighthouse , MN 61, Two Harbors, Minnesota _____	26
12. Mackinac Bridge to Mackinaw City, Michigan _____	28

Cabot Trail CkPt #01 – Perry Monument Presque Isle Peninsula, Erie, PA



42.1549500, -80.0915917



Cabot Trail CkPt #01 – Perry Monument Presque Isle Peninsula, Erie, PA

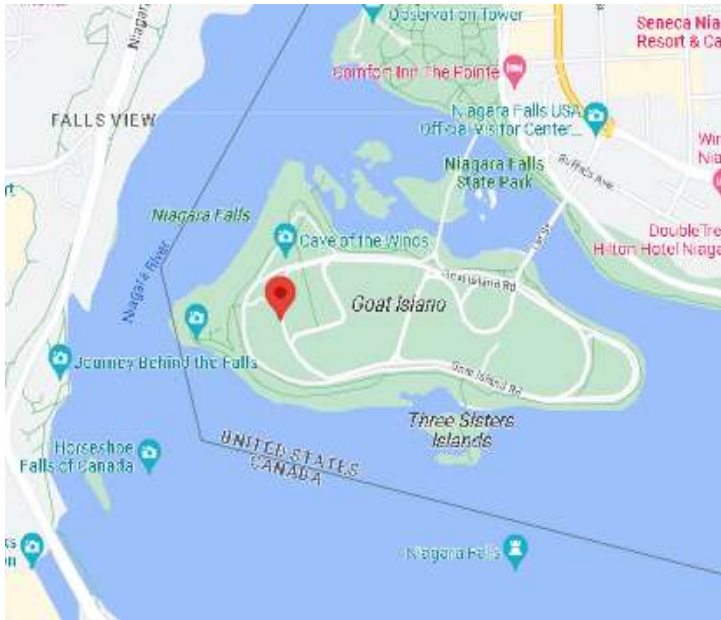
Receipts



Cabot Trail CkPt #02 – Niagara Falls Either side, New York, or Ontario



43.0804750, -79.0716639



Cabot Trail CkPt #02 – Niagara Falls Either side, New York, or Ontario

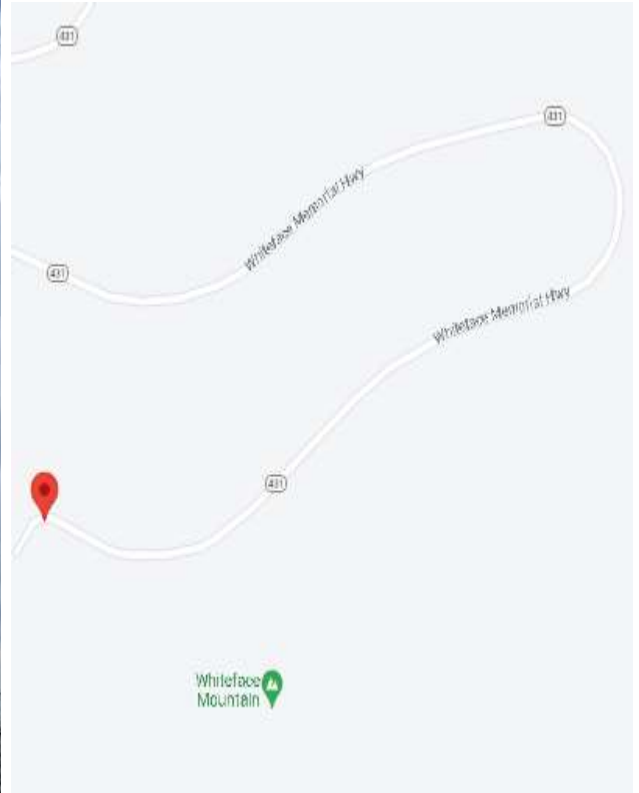
Receipts



Cabot Trail CkPt #03 – Lake Placid, Summit of Whiteface Mountain



44.3674139, -73.9059750



Cabot Trail CkPt #03 – Lake Placid, Summit of Whiteface Mountain

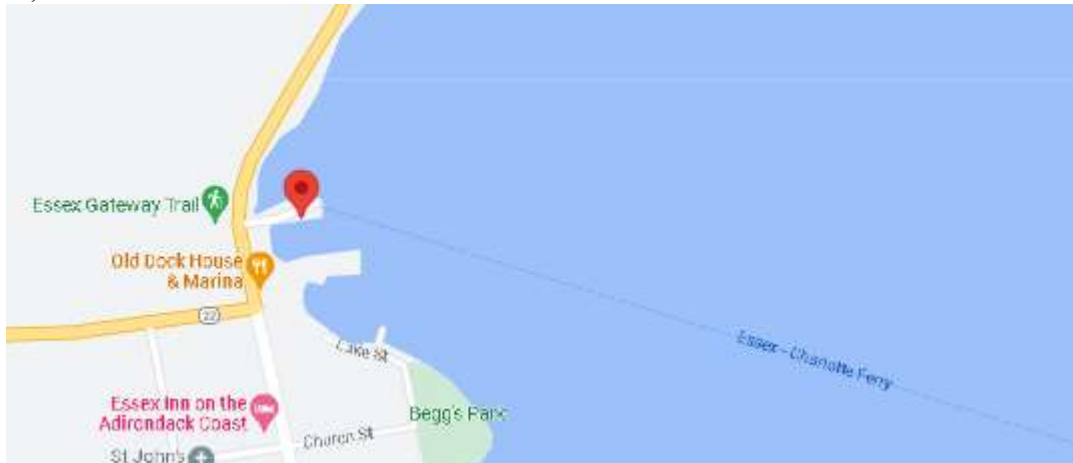
Receipts



Cabot Trail CkPt #04 – Ferry across Lake Champlain, Essex, New York to Charlotte, Vermont



44.3107333, -73.3510444



Cabot Trail CkPt #04 – Ferry across Lake Champlain, Essex, New York to Charlotte, Vermont



Cabot Trail CkPt #04 – Ferry across Lake Champlain, Essex, New York to Charlotte, Vermont

Receipts



Cabot Trail CkPt #05 – Kancamagus Scenic Byway, RT112 Lincoln, NH to Bartlett, NH



44.0429389, -71.6690833



Cabot Trail CkPt #05 – Kancamagus Scenic Byway, RT112 Lincoln, NH to Bartlett, NH



44.0779833, -71.2766500



Cabot Trail CkPt #05 – Kancamagus Scenic Byway, RT112 Lincoln, NH to Bartlett, NH

Receipts



Route Taken



Cabot Trail CkPt #06 – Cabot Trail Cape Breton Island, Nova Scotia HWY19



46.3327972, -61.0959167



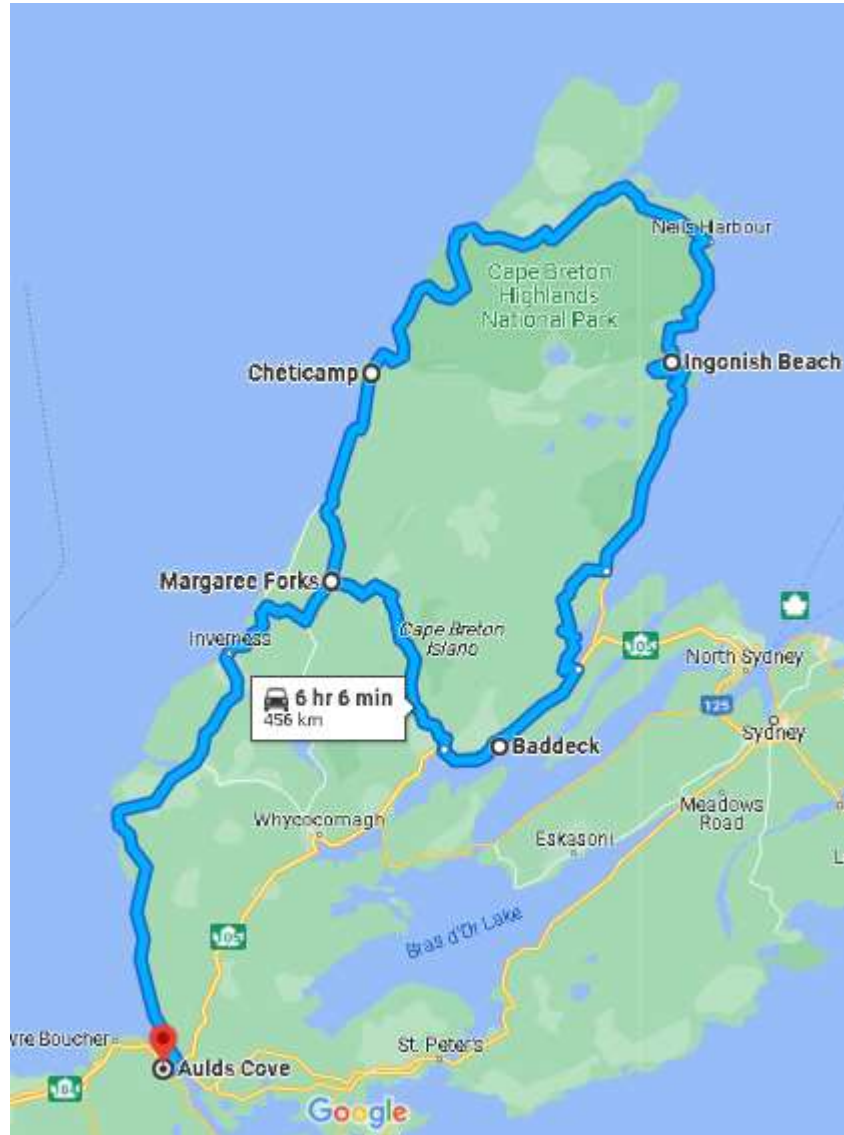
Cabot Trail CkPt #06 – Cabot Trail Cape Brenton Island, Nova Scotia HWY19

Receipts



Cabot Trail CkPt #06 – Cabot Trail Cape Breton Island, Nova Scotia HWY19

Route Taken



Cabot Trail CkPt #07 – Madawaska, Maine The Four Corners Park



47.3559389, -68.3324056



Cabot Trail CkPt #07 – Madawaska, Maine The Four Corners Park

Receipts



**Cabot Trail CkPt #08 – Quebec City or Montreal the walled cities
(Quebec)**



46.8108861, -71.2087694



**Cabot Trail CkPt #08 – Quebec City or Montreal the walled cities
(Quebec)**



46.8128028, -71.2058861



**Cabot Trail CkPt #08 – Quebec City or Montreal the walled cities
(Quebec)**

Receipts



Cabot Trail CkPt #09 – Sudbury, Ontario the Giant Canadian Nickel at the Dynamic Earth Science Museum



46.4736667, -81.0326167



Cabot Trail CkPt #09 – Sudbury, Ontario the Giant Canadian Nickel at the Dynamic Earth Science Museum

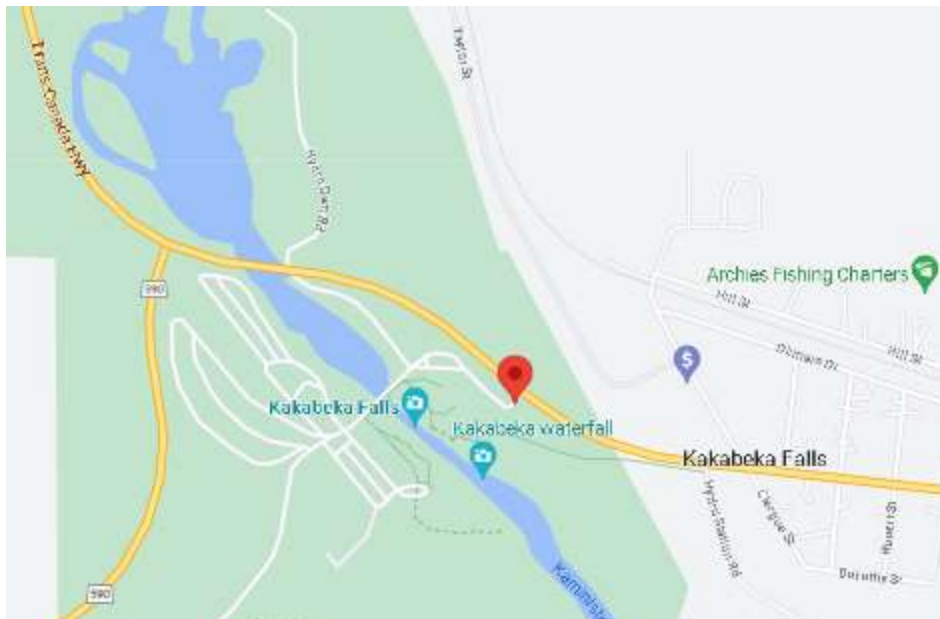
Receipts



Cabot Trail CkPt #10 – Kakabeka Falls, TC11 20 miles west of Thunder Bay Ontario



48.4030139, -89.6226194



Cabot Trail CkPt #10 – Kakabeka Falls, TC11 20 miles west of Thunder Bay Ontario

Receipts

Jim

TRANSACTION RECORD
KAKABEKA ESSO

 4795 HWY 17
 KAKABEKA FALL ON POT 1W0

DATE: 2023-07-14 TIME: 12:28:13
 Paypoint: DIK TRANS #: 107493
 Station#: 00303384 Cashier: manager
 PIST: R888775616

FUEL	(L)	(\$/L)	(\$)
Pump 5 SUPRN	12.975	1.919	24.90
PRODUCT	QTY	PRICE	AMOUNT
salted peanuts	1	2.19	2.19 H
		HST	0.28
TOTAL CAD	\$	27.37	
CREDIT CARD	\$	27.37	
* HST INCLUDED IN FUEL \$ 2.65			

Kakabeka Falls Provincial Park
 Kakabeka Falls Provincial Park
 Hwy 11/17 Fire #4853
 Kakabeka Falls, ON POT1W0
 807-473-9231
 22441212
 MV2244121204

TYPE: PURCHASE
 CARD TYPE: INSERTED
 CARD NUMBER: VISA *****0292
 DATE/TIME: 14/7/2023 12:37:40 PM

AMOUNT: \$6.50

APP PREFERRED NAME: Visa Credit
 AID: A0000000031010
 APPR CODE: 014433
 BATCH NUMBER: 4
 INVOICE NUMBER: 53
 REF NUMBER: 53
 RRN: 0010049480

001 APPROVED

-- IMPORTANT --
 Retain this copy for your records

*** CUSTOMER COPY ***

Cabot Trail CkPt #11 – Two Harbors, Minnesota, MN61 Split Rock Lighthouse



47.2054806, -91.3682167



Cabot Trail CkPt #11 – Two Harbors, Minnesota, MN61 Split Rock Lighthouse

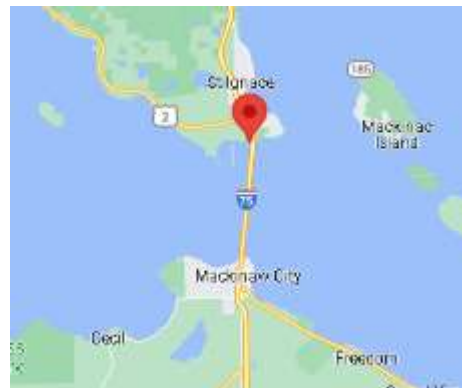
Receipts



Cabot Trail CkPt #12 – Mackinac Bridge to Mackinaw City, Michigan



45.8467333, -84.7261972



Cabot Trail CkPt #12 – Mackinac Bridge to Mackinaw City, Michigan

Receipts

