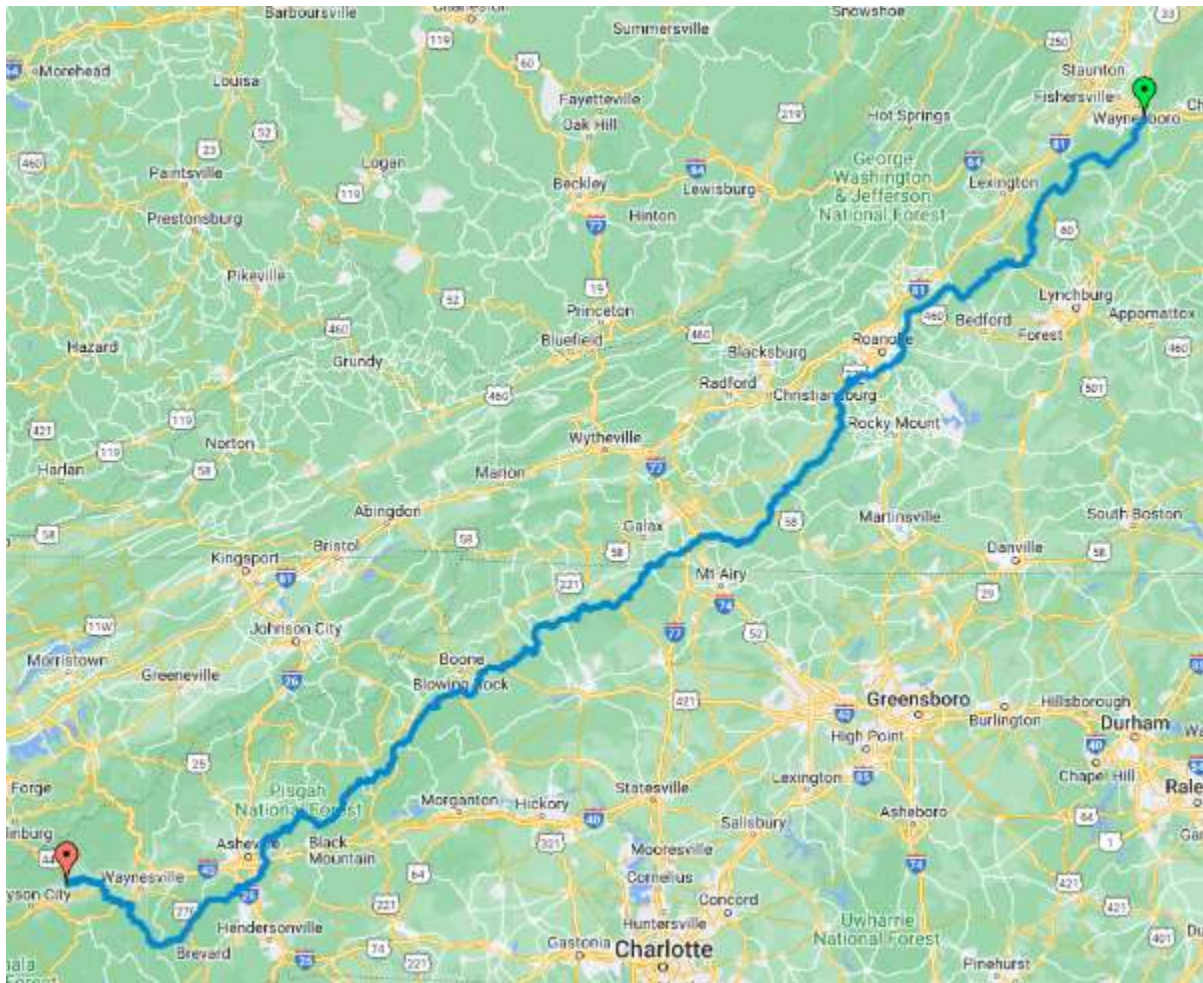


1. Blue Ridge Parkway Virginia and/or North Carolina Any 150 mile segment - Did all 500 miles _____	2
2. Pig Trail Arkansas Rt23 Ozark to Eureka Springs 80 miles _____	6
3. Twisted Sisters Texas RR335 RR336 RR337 155 miles _____	11
4. Big Bend National Park Texas US385 Ross Maxwell Scenic Drive Maverick Drive to Santa Elena Canyon 33 miles out and 33 back _____	19
5. Coronado Trail Arizona US191 Three Way to Springerville 130 miles _____	24
6. Monument Valley Arizona US163 Kayenta to Mexican Hat 43 miles _____	28
7. San Juan Skyway Colorado CO-145 Cortez to Placerville 83 miles _____	32
8. Dinosaur Diamond Prehistoric Highway Utah UT128 Moab to I-70 45 miles _____	36
9. Grand Staircase Escalante NM Utah UT12 Torrey to Bryce Canyon exit 102 miles _____	40
10. Loneliest Road in America Nevada US50 Ely to Fernley 285 miles _____	44
16. Bighorn Scenic Byway Wyoming US14 Greybull to Ranchester 80 miles _____	48
17. Theodore Roosevelt National Park Medora North Dakota Park Loop 35 miles _____	52
18. Great River Road Wisconsin WI-35 LaCrosse to Prairie du Chien 63 miles _____	56
19. Triple Nickel Ohio OH555 Zanesville to Little Hocking 62 miles _____	60
20. Back of the Dragon Virginia VA16 Tazewell to Marion 32 miles _____	64

Ride #1 – Blue Ridge Parkway Virginia and/or North Carolina Any 150 mile segment

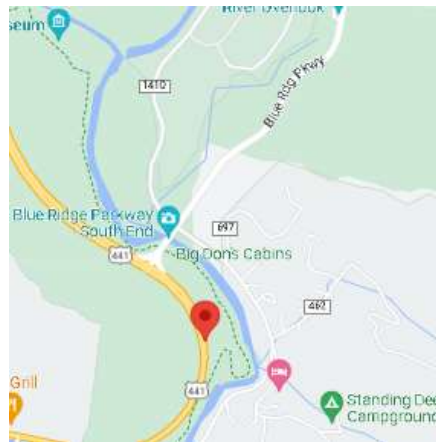


Ride #1 – Blue Ridge Parkway Virginia and/or North Carolina Any 150 mile segment

Start of Ride #1, South End



35.5029694, -83.2990028

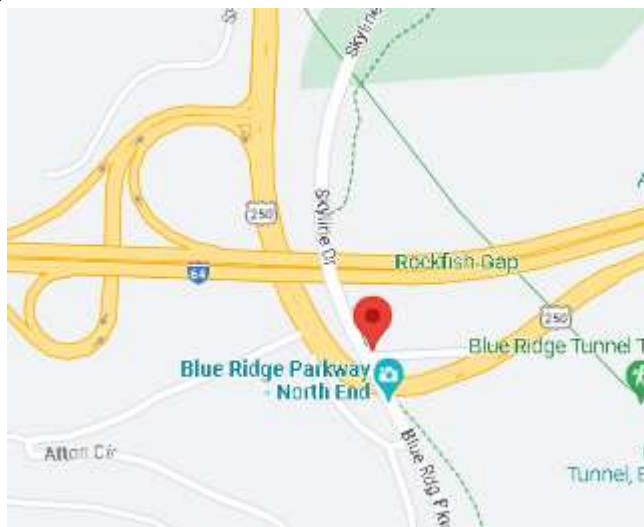


Ride #1 – Blue Ridge Parkway Virginia and/or North Carolina Any 150 mile segment

End of Ride #1, North End

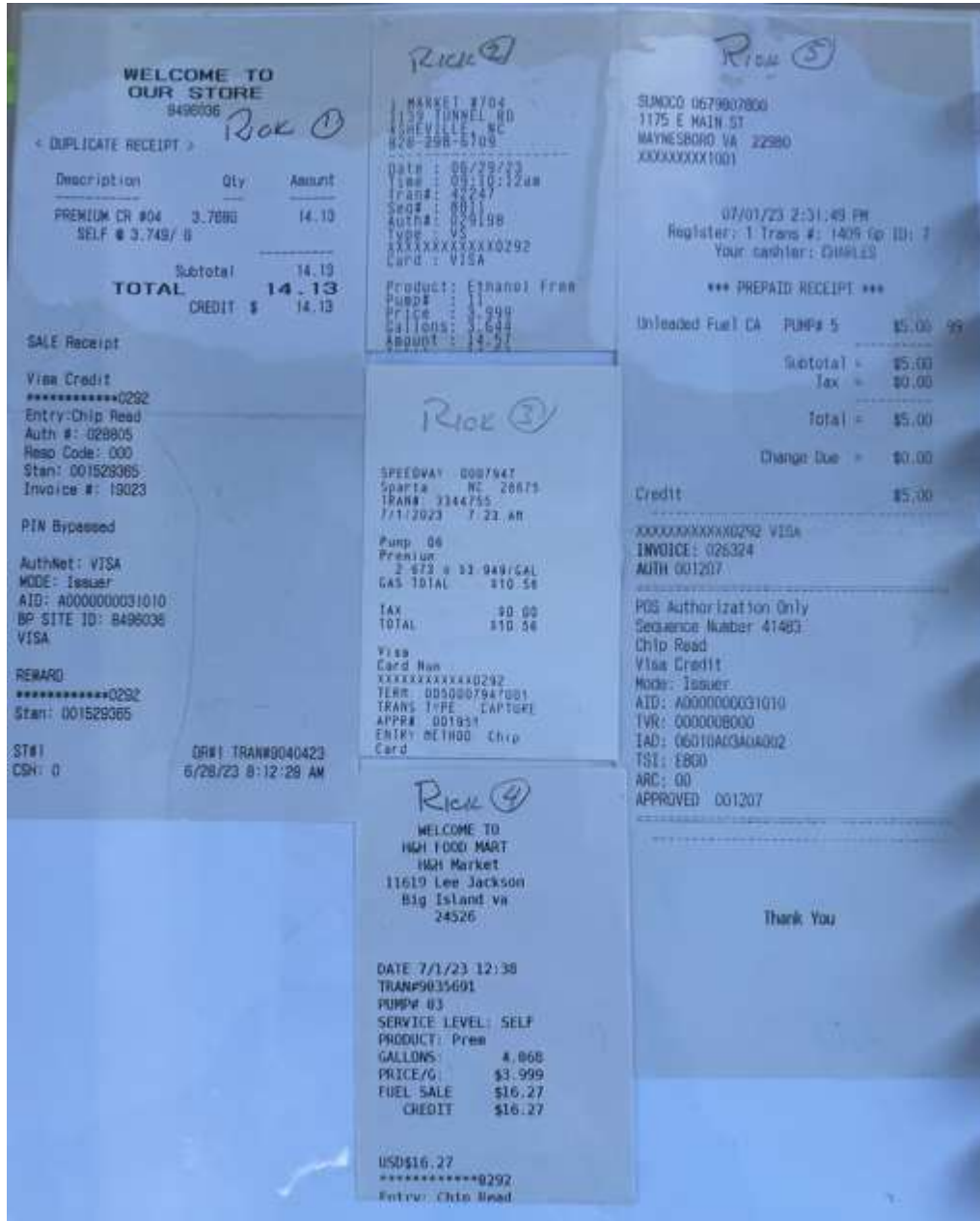


38.0316556, -78.8583056

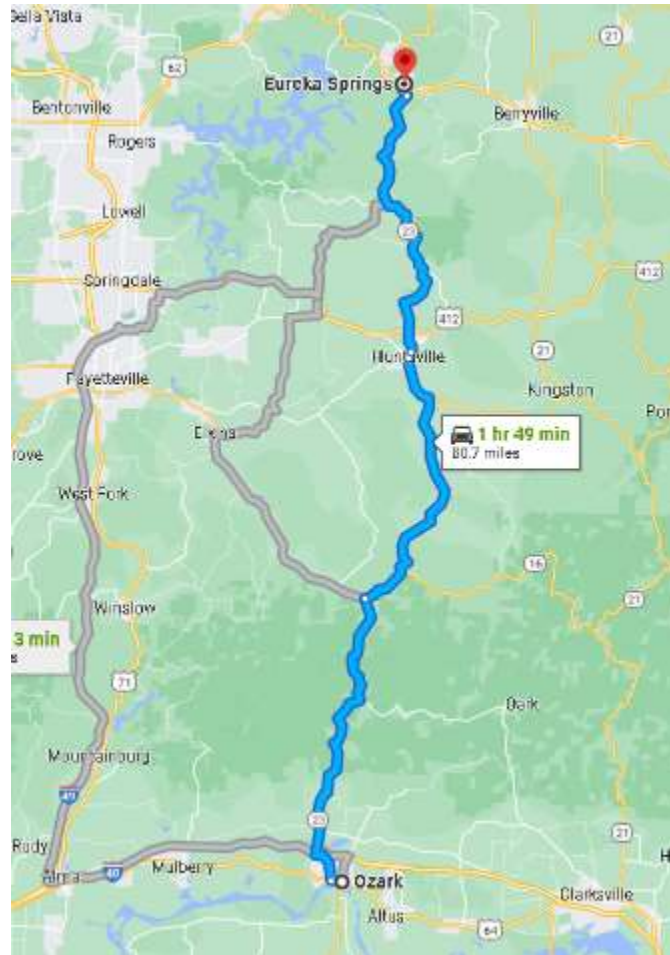


Ride #1 – Blue Ridge Parkway Virginia and/or North Carolina Any 150 mile segment

Receipts



Ride #2 – Pig Trail Arkansas Rt23 Ozark to Eureka Springs 80 miles

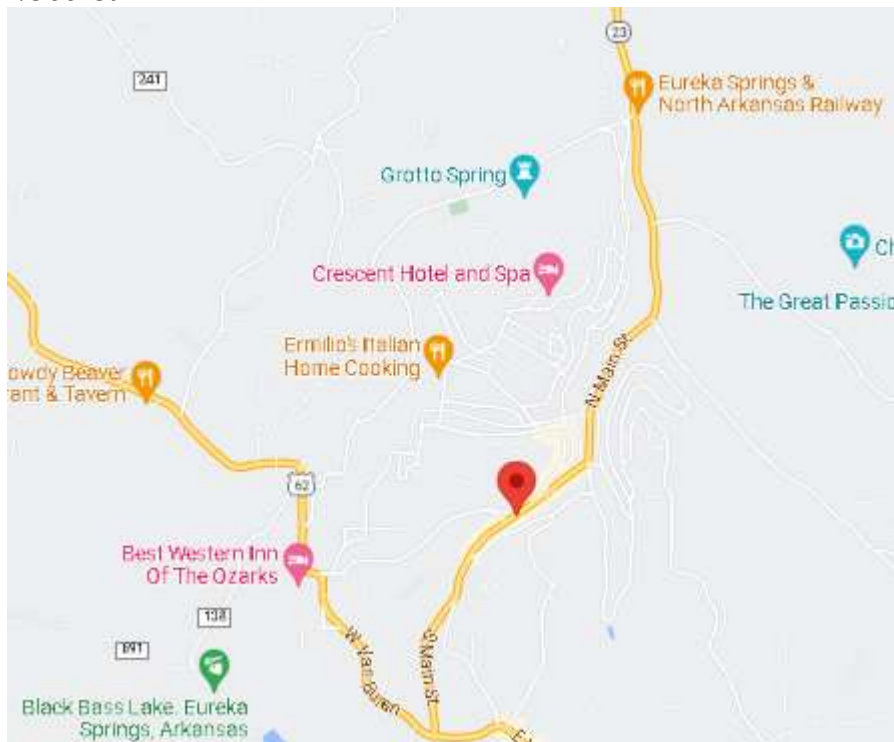


Ride #2 – Pig Trail Arkansas Rt23 Ozark to Eureka Springs 80 miles

Start of Ride #2



36.4009528, -93.7388139



Ride #2 – Pig Trail Arkansas Rt23 Ozark to Eureka Springs 80 miles



36.3936139, -93.7419194



Ride #2 – Pig Trail Arkansas Rt23 Ozark to Eureka Springs 80 miles

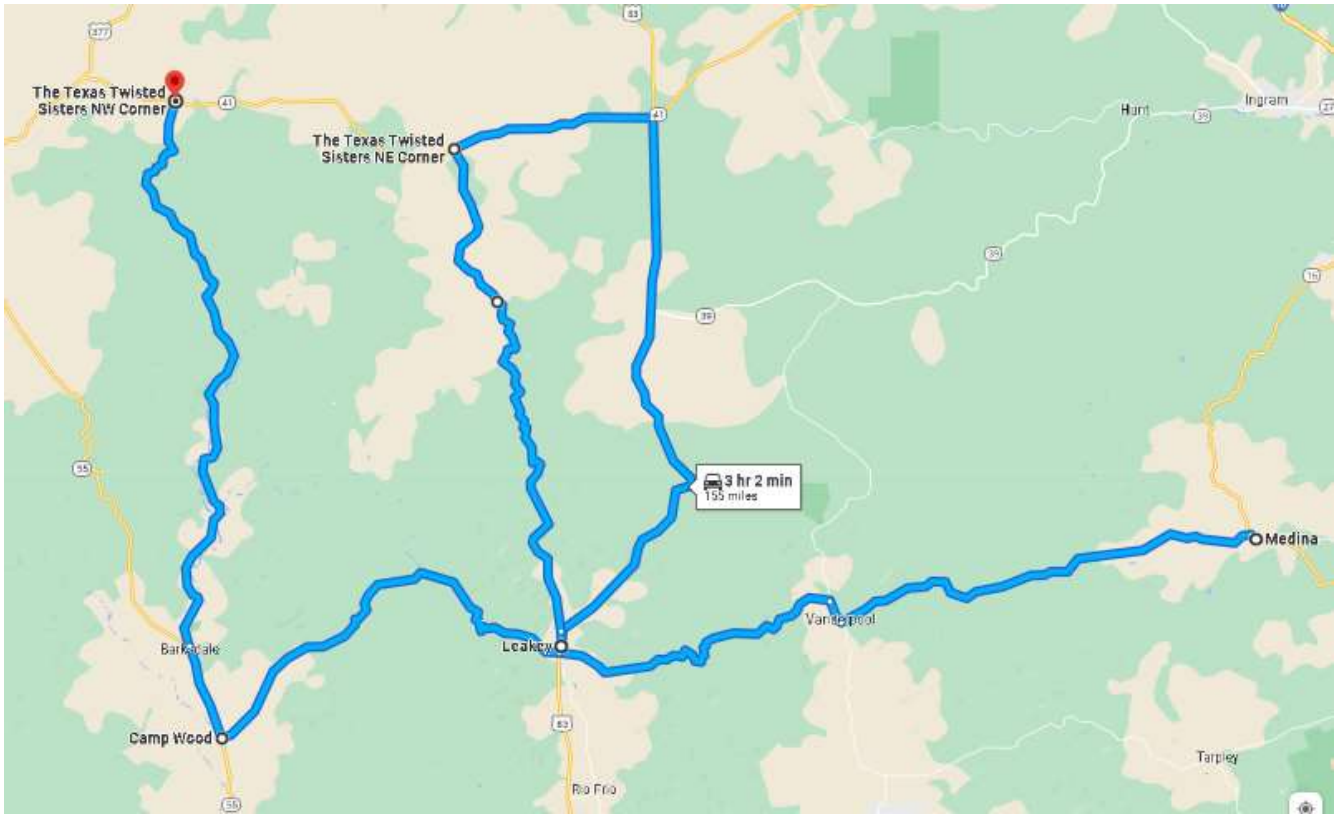
End of Ride #2



35.5221333, -93.8650139



Ride #3 – The Texas Twisted Sisters



Ride #3 – The Texas Twisted Sisters

Start in Medina Texas – RR337, SE Corner



29.7970500 , -99.2477944



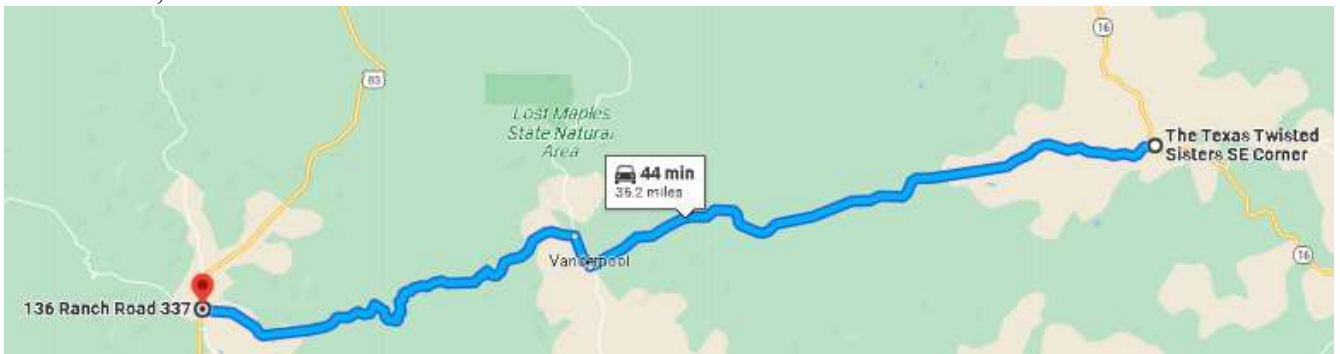
29.7998778, -99.2519611

Ride #3 – The Texas Twisted Sisters

SE corner to Leakey Texas (Jct 83/RR337)



29.7242028, -99.7616889

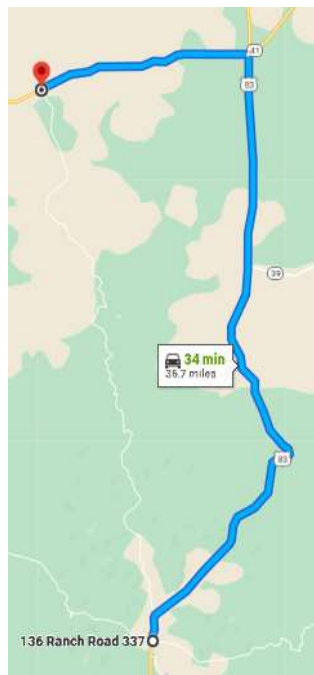


Ride #3 – The Texas Twisted Sisters

From Leakey Texas to the NE Corner via Rt 83/41, to head south on RR336



30.0467417, -99.8408056



Ride #3 – The Texas Twisted Sisters

From NE Corner South on RR336 to Leakey/RR337 West



29.7245556, -99.7636194

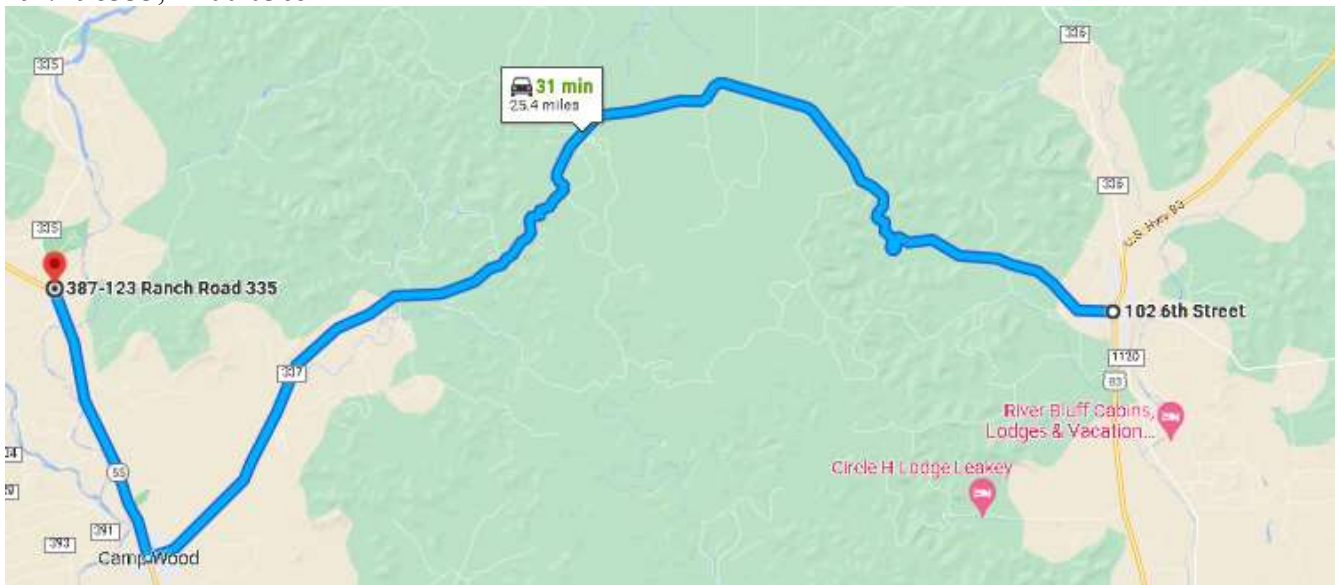


Ride #3 – The Texas Twisted Sisters

From Leakey RR337/Rt83 to Campwood, SW Corner and start of RR 335 North



29.7298333, -100.0365444



Ride #3 – The Texas Twisted Sisters

The NW Corner, RR 335 and the end of The Texas Twisted Sisters

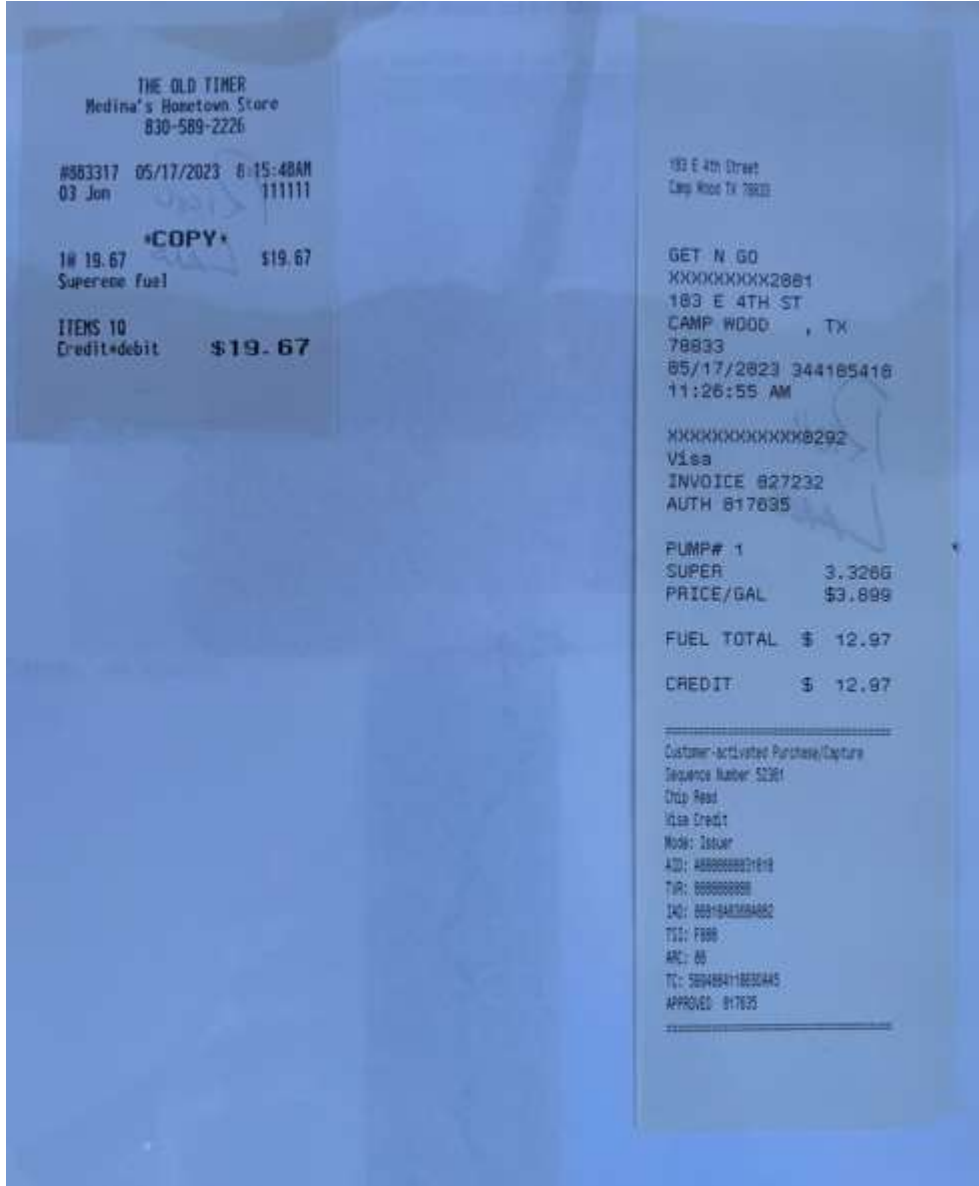


30.0771333, -100.0467694



Ride #3 – The Texas Twisted Sisters

Receipts



Ride #4 – Big Ben National Park



Ride #4 – Big Ben National Park

Start of Ride #4



Google Earth [29.3215611, -103.3828361](https://www.google.com/maps/@29.3215611,-103.3828361) or [Google Maps](#)



Ride #4 – Big Ben National Park

Middle of ride #4, to Santa Elena Canyon



Google Earth [29.1673806, -103.6104806](https://www.google.com/maps/@29.1673806,-103.6104806) or [Google Maps](#)



Ride #4 – Big Ben National Park

End of ride #4



Google Earth [29.3010083, -103.5075389](https://www.google.com/maps/@29.3010083,-103.5075389) or [Google Maps](#)



Ride #4 – Big Ben National Park

Receipts



Ride #5 – Coronado Trail Arizona US191 Three Way to Springerville AZ



Ride #5 – Coronado Trail Arizona US191 Three Way to Springerville AZ

Start of Ride #5



32.9484833, -109.2295139



Ride #5 – Coronado Trail Arizona US191 Three Way to Springerville AZ

End of Ride #5

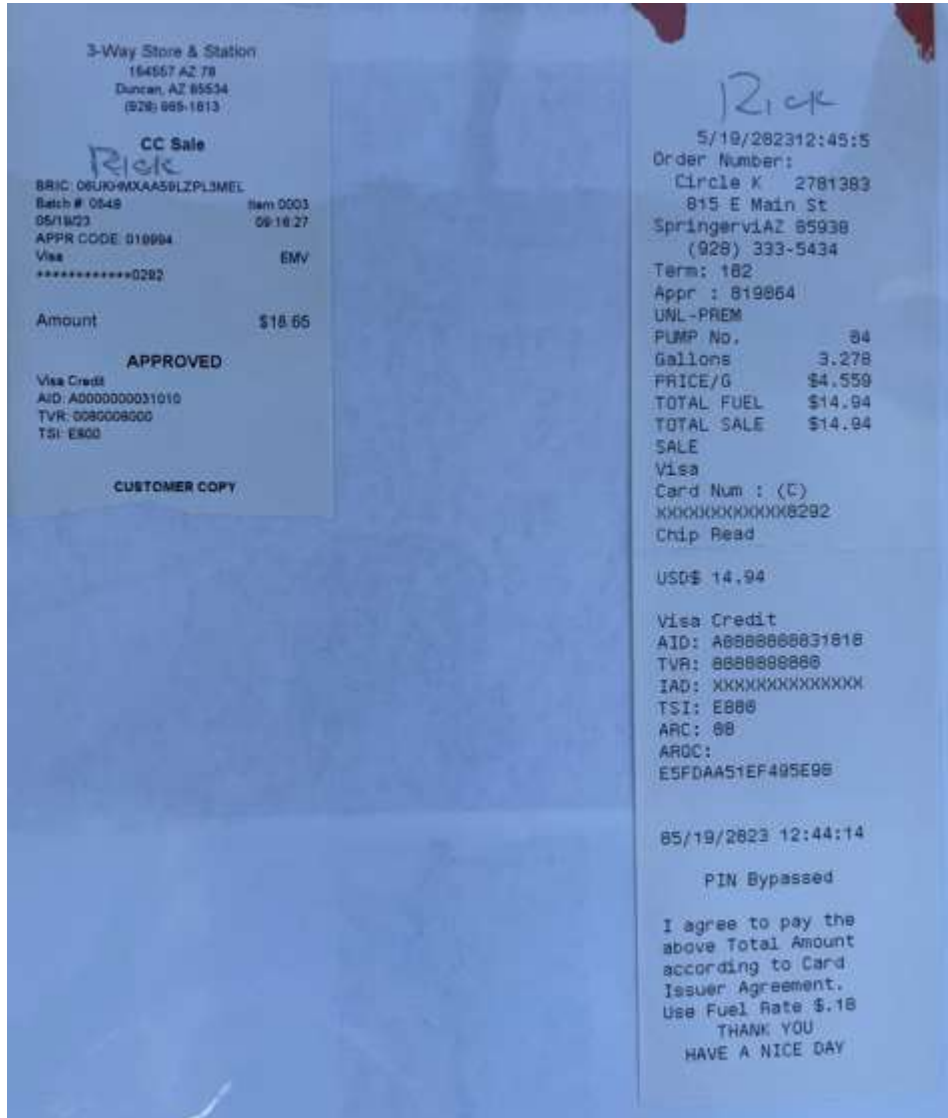


34.1329722, -109.2753056

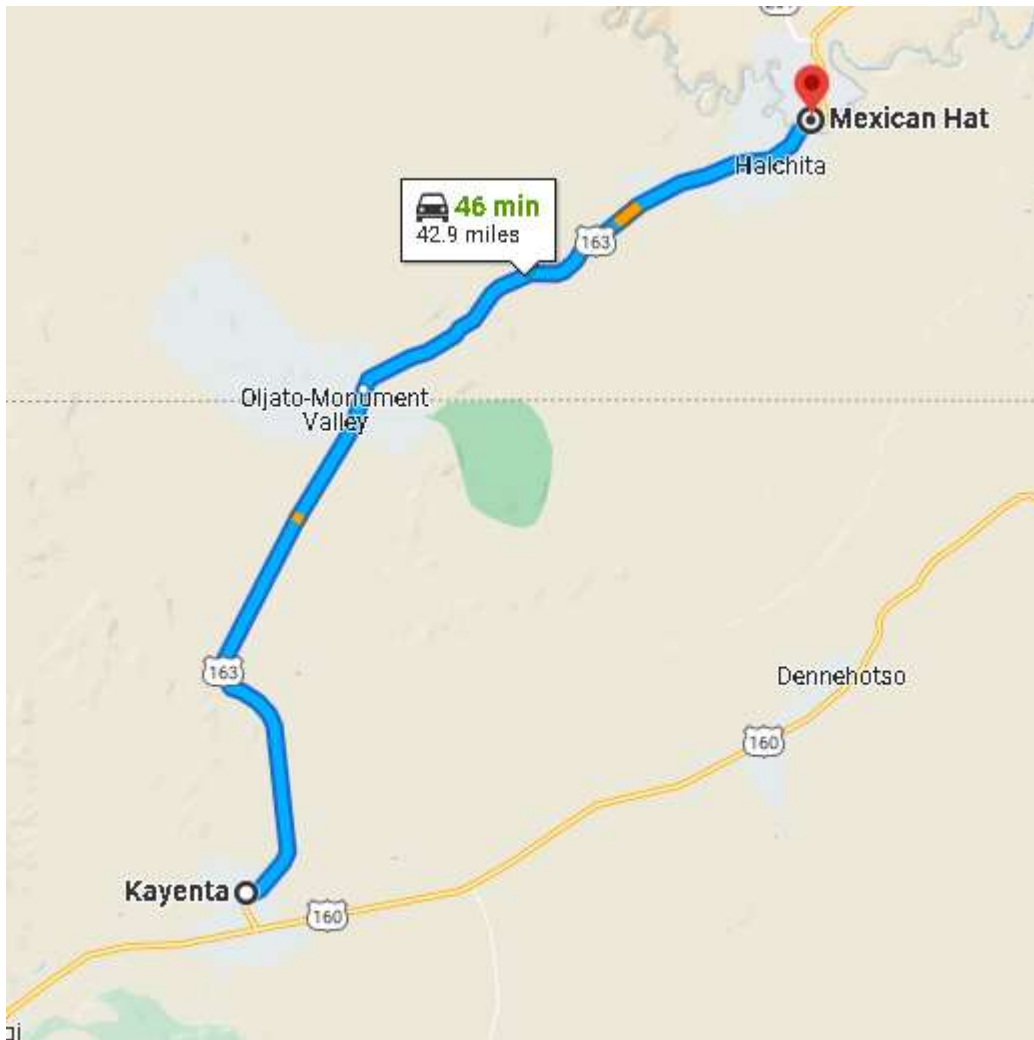


Ride #5 – Coronado Trail Arizona US191 Three Way to Springerville AZ

Receipts



Ride #6 – Monument Valley Arizona US163 Kayenta to Mexican Hat



Ride #6 – Monument Valley Arizona US163 Kayenta to Mexican Hat

Start of Ride #6



36.7081139, -110.2458417

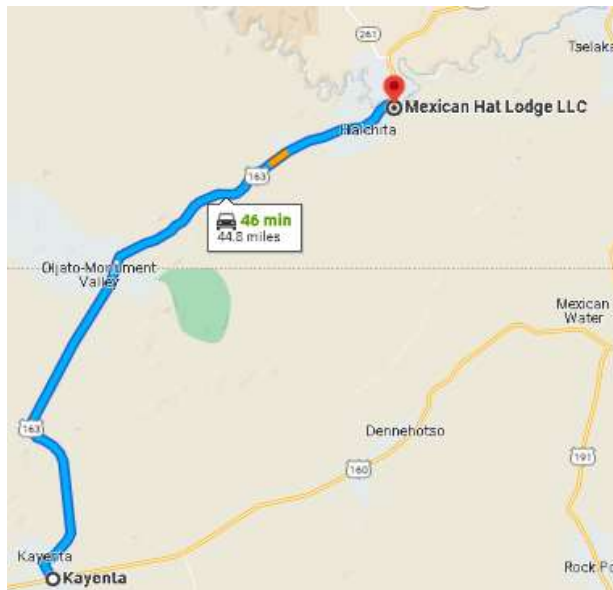


Ride #6 – Monument Valley Arizona US163 Kayenta to Mexican Hat

End of Ride #6

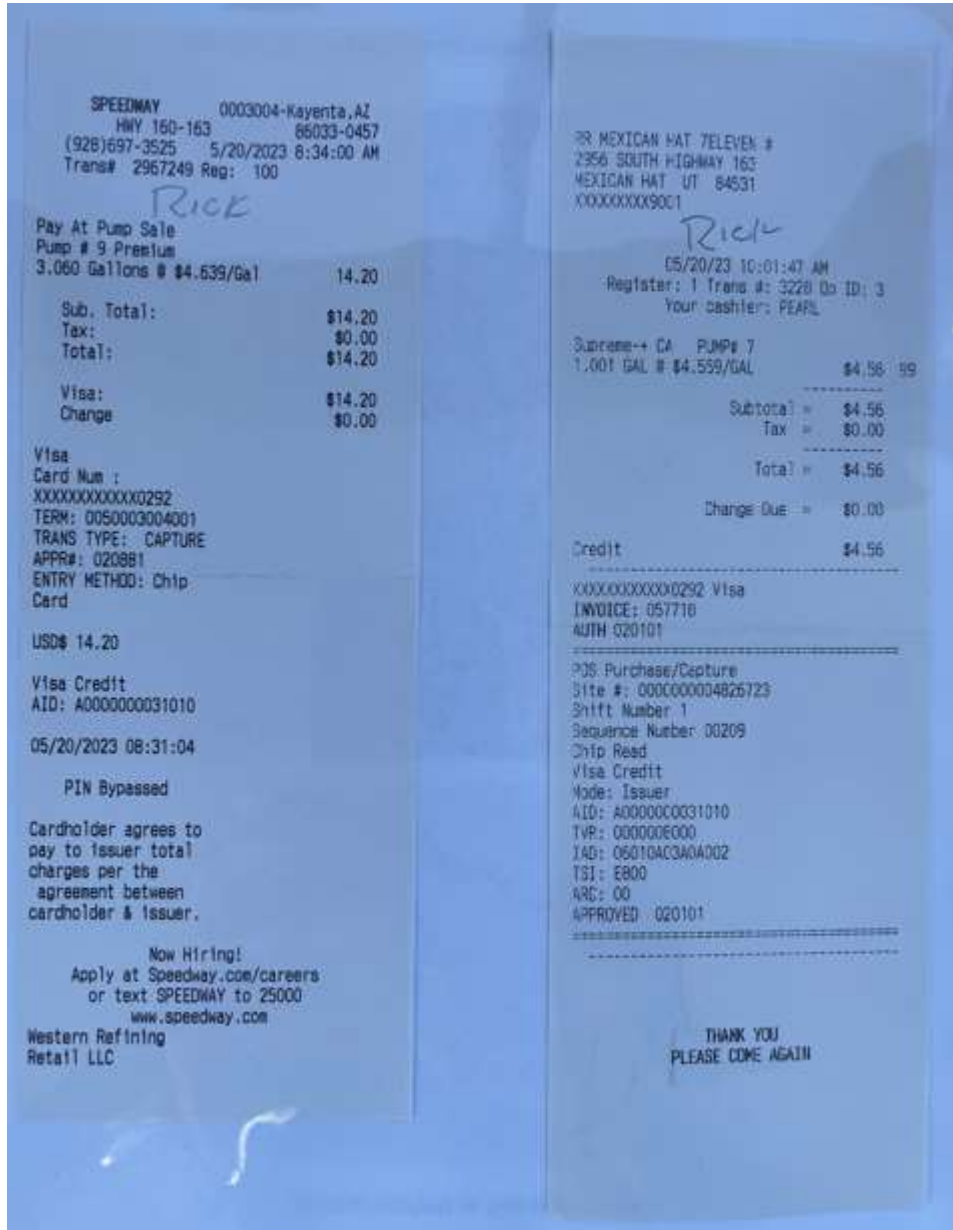


37.1487917, -109.8595639

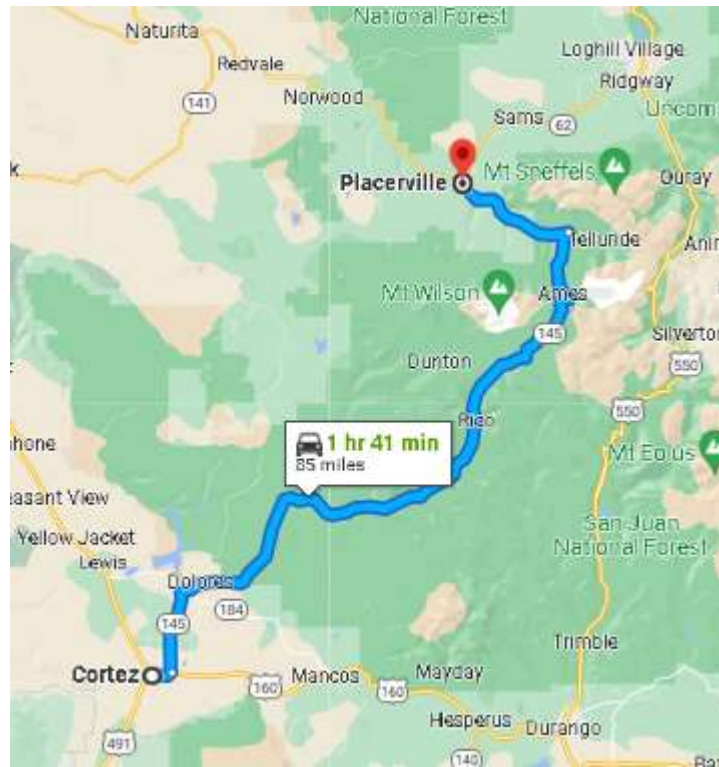


Ride #6 – Monument Valley Arizona US163 Kayenta to Mexican Hat

Receipts



Ride #7 – San Juan Skyway Colorado, CO145 Cortez to Placerville

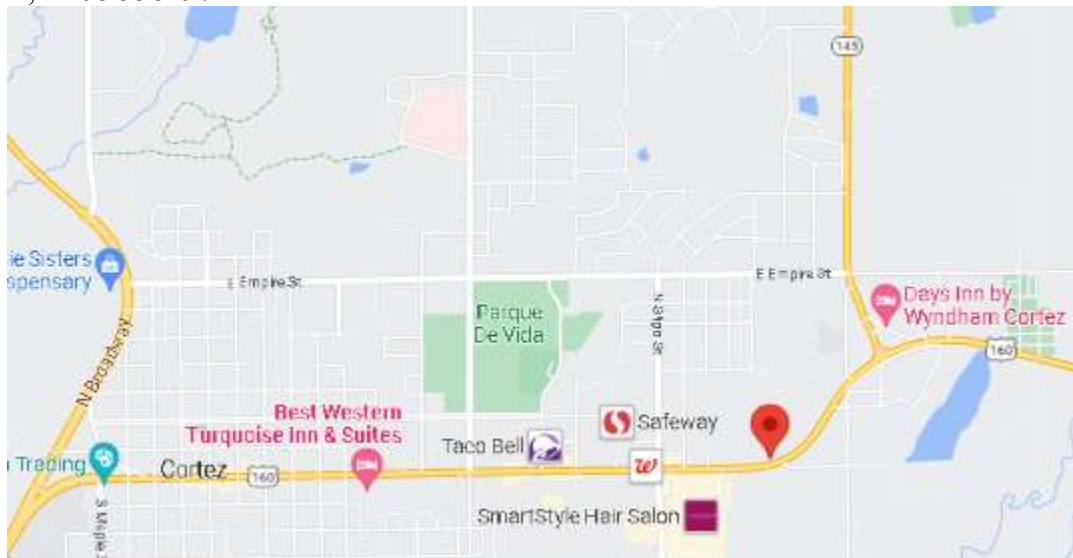


Ride #7 – San Juan Skyway Colorado, CO145 Cortez to Placerville

Start of Ride #7



37.3494111, -108.5581972

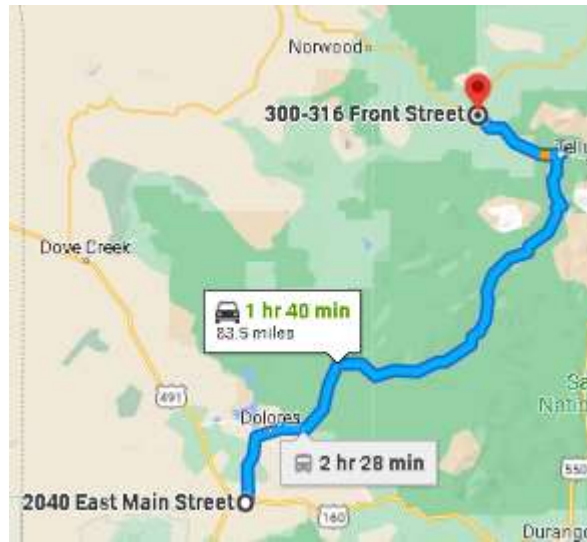


Ride #7 – San Juan Skyway Colorado, CO145 Cortez to Placerville

End of Ride #7

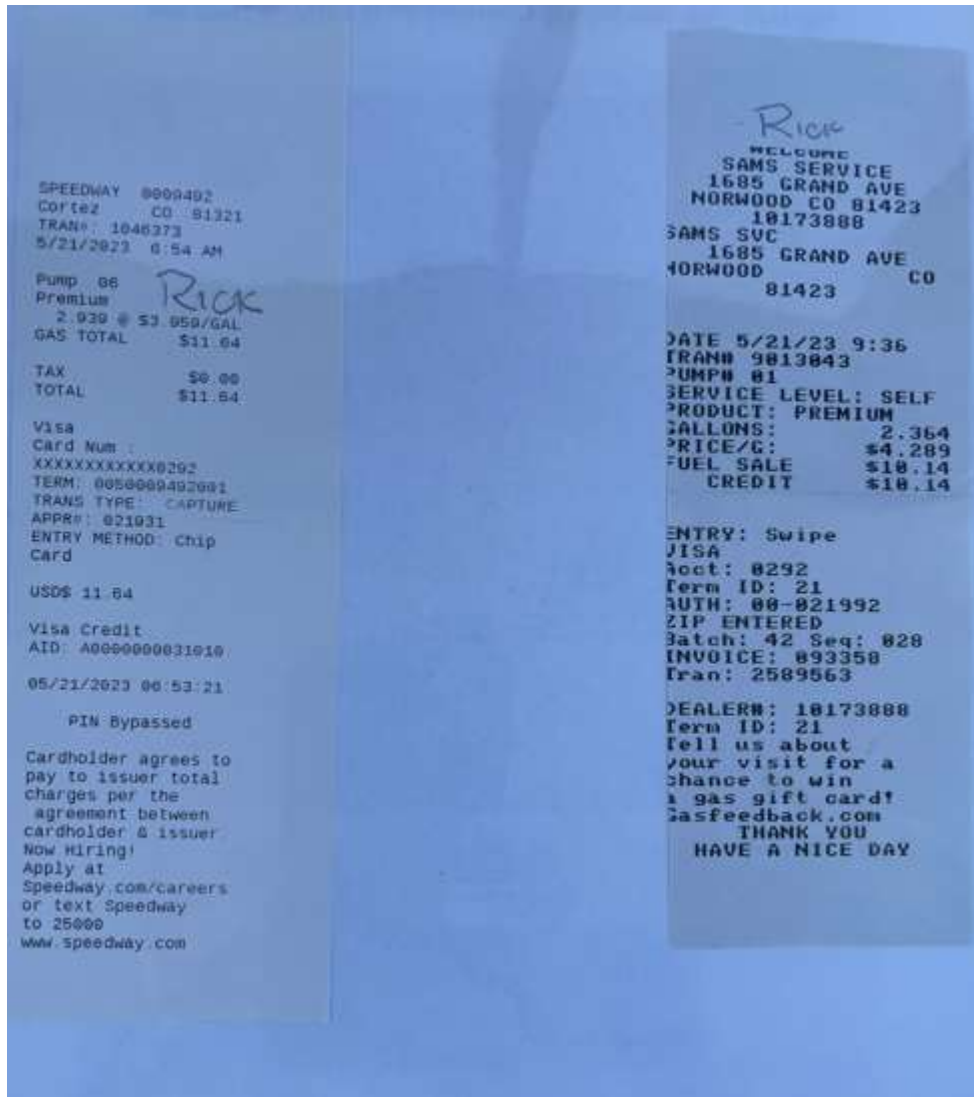


38.0172361, -108.0535806

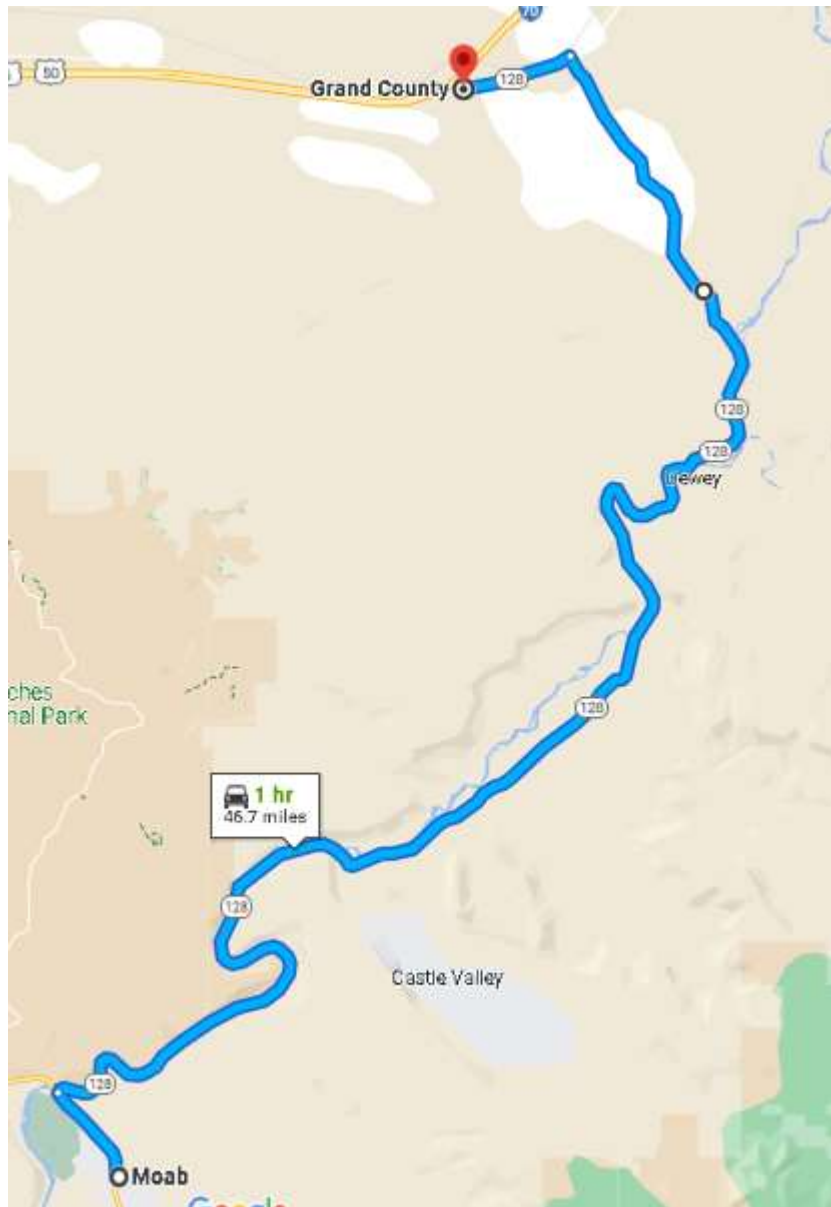


Ride #7 – San Juan Skyway Colorado, CO145 Cortez to Placerville

Receipts



Ride #8 – Dinosaur Diamond Prehistoric Highway Utah UT128 Moab to I-70

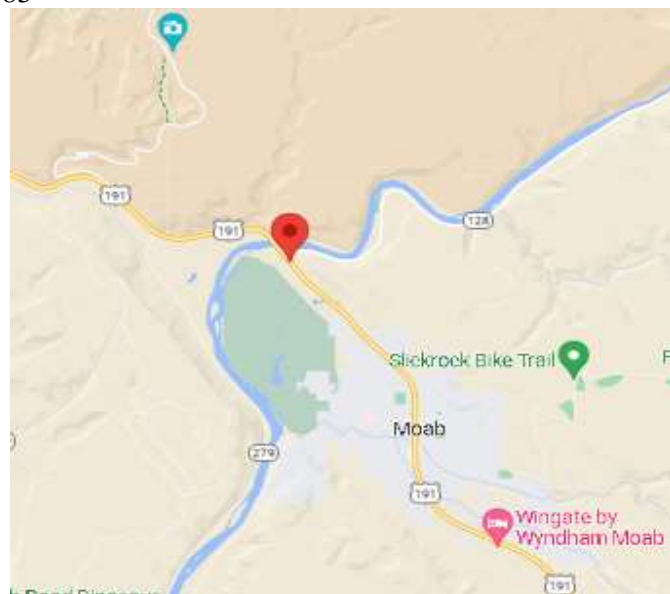


Ride #8 – Dinosaur Diamond Prehistoric Highway Utah UT128 Moab to I-70

Start of Ride #8



38.6016361, -109.5754083



Ride #8 – Dinosaur Diamond Prehistoric Highway Utah UT128 Moab to I-70

End of Ride #8

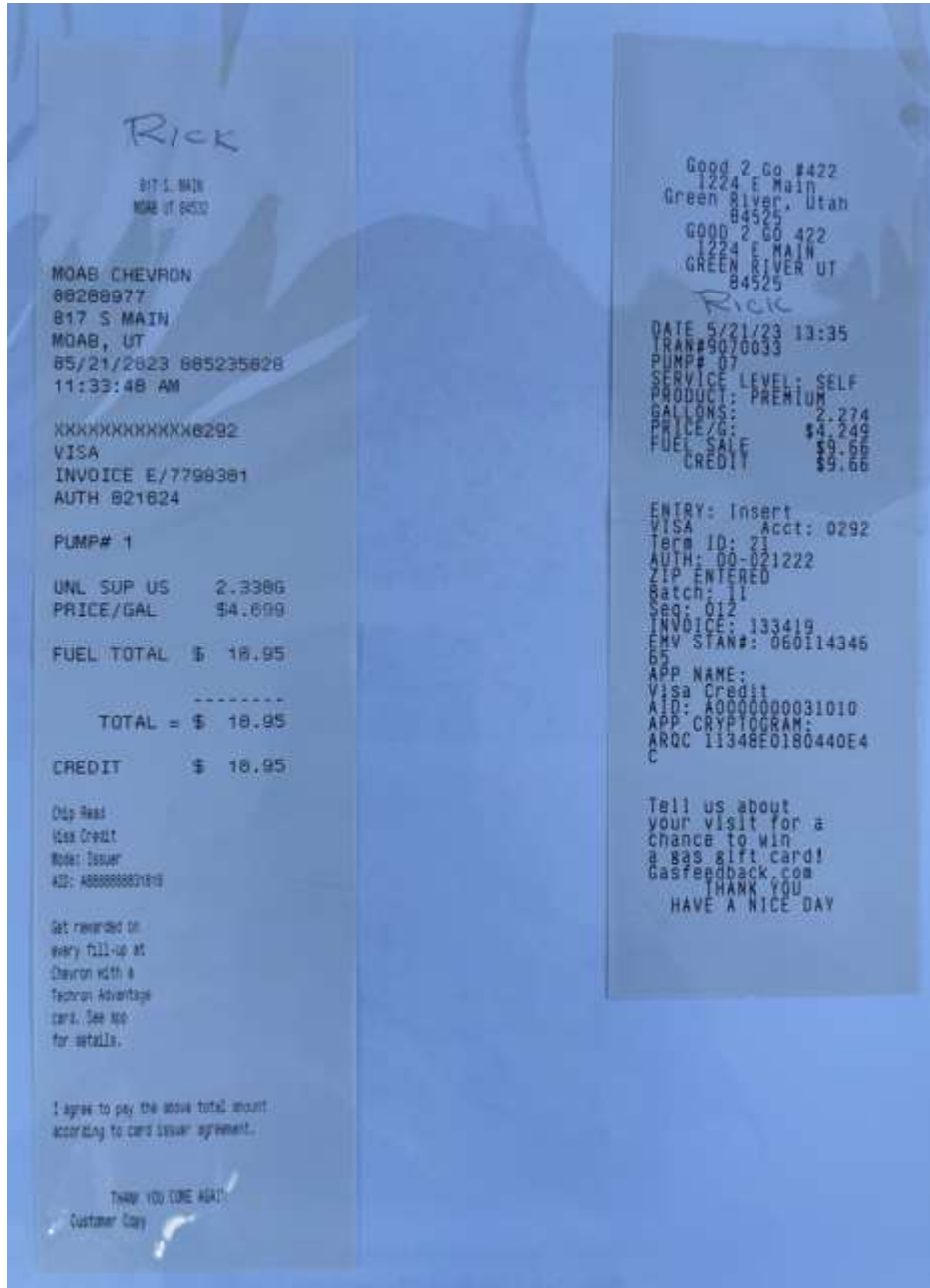


38.9377667, -109.4070139

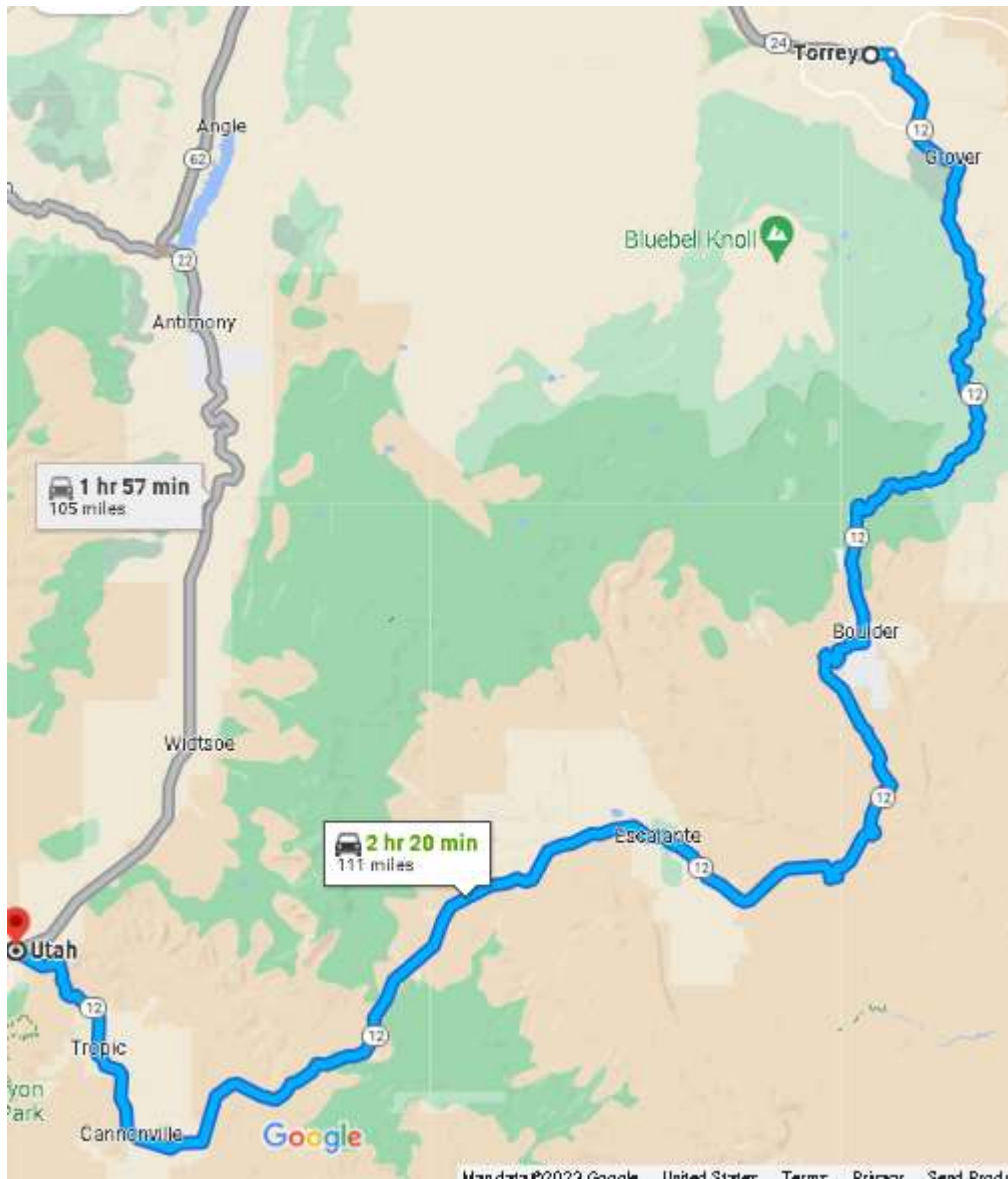


Ride #8 – Dinosaur Diamond Prehistoric Highway Utah UT128 Moab to I-70

Receipts



Ride #9 – Grand Staircase Escalante, UT12 Torrey to Bryce Canyon



Ride #9 – Grand Staircase Esclante, UT12 Torrey to Bryce Canyon

Start of Ride #9



38.2984083, -111.4016417

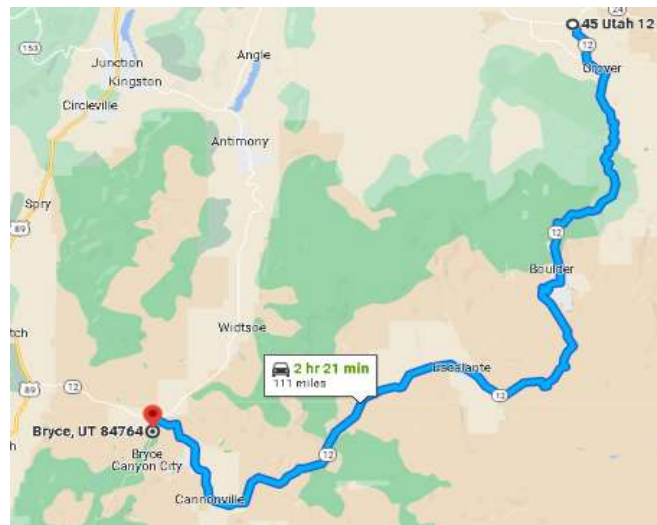


Ride #9 – Grand Staircase Escalante, UT12 Torrey to Bryce Canyon

End of Ride #9

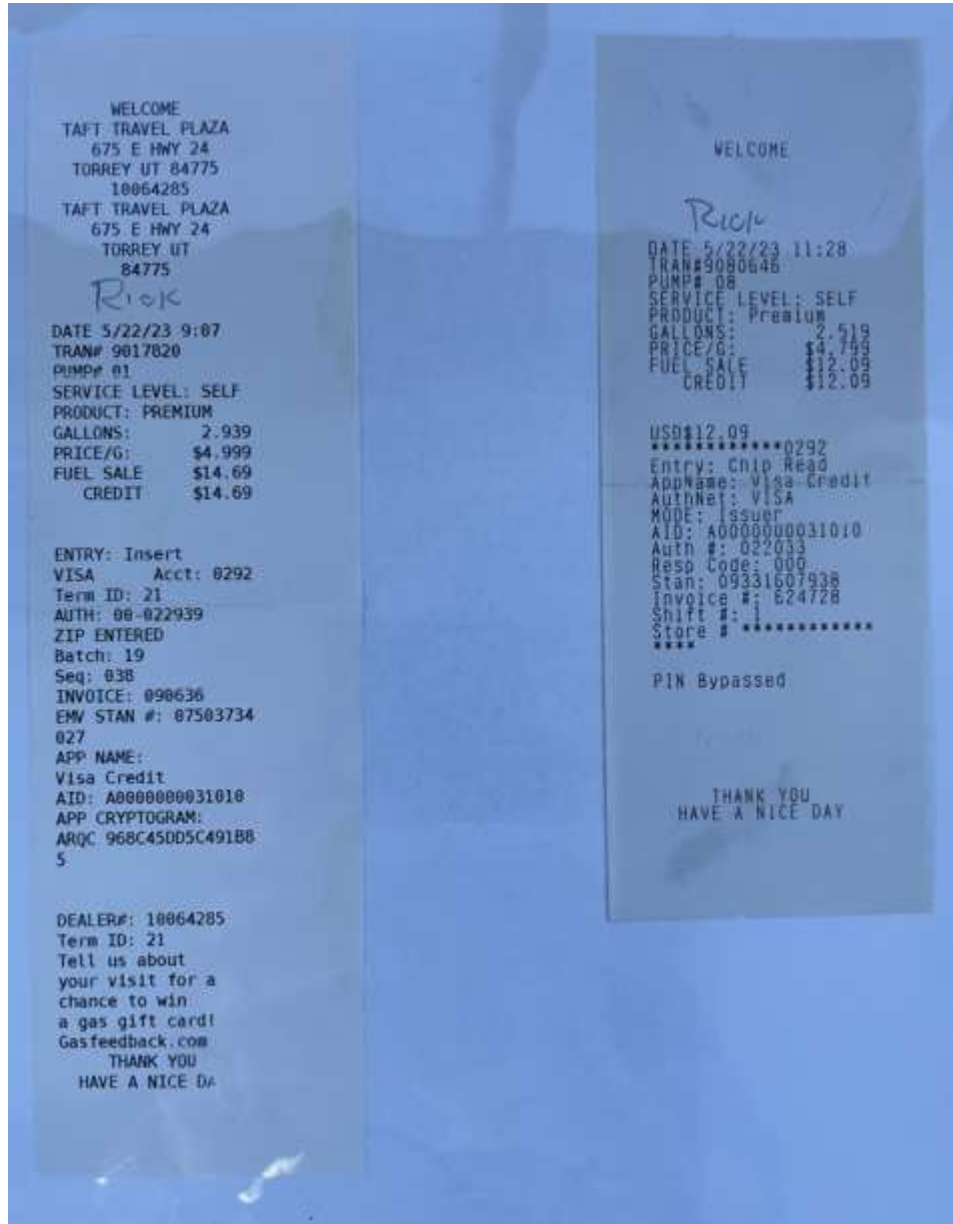


37.6726639, -112.1570972



Ride #9 – Grand Staircase Esclante, UT12 Torrey to Bryce Canyon

Receipts



Ride #10 – Loneliest Road in America Nevada US50 Ely to Fernley 285 miles

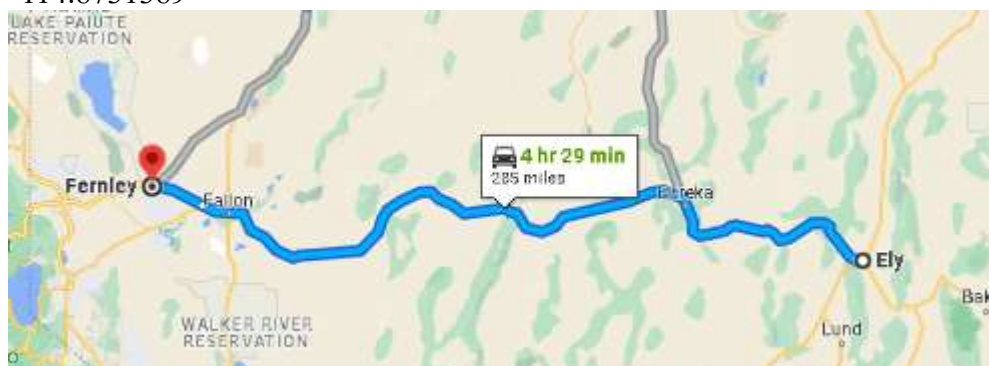


Ride #10 – Loneliest Road in America Nevada US50 Ely to Fernley 285 miles

Start of Ride #10



39.2507778, -114.8731389



Ride #10 – Loneliest Road in America Nevada US50 Ely to Fernley 285 miles

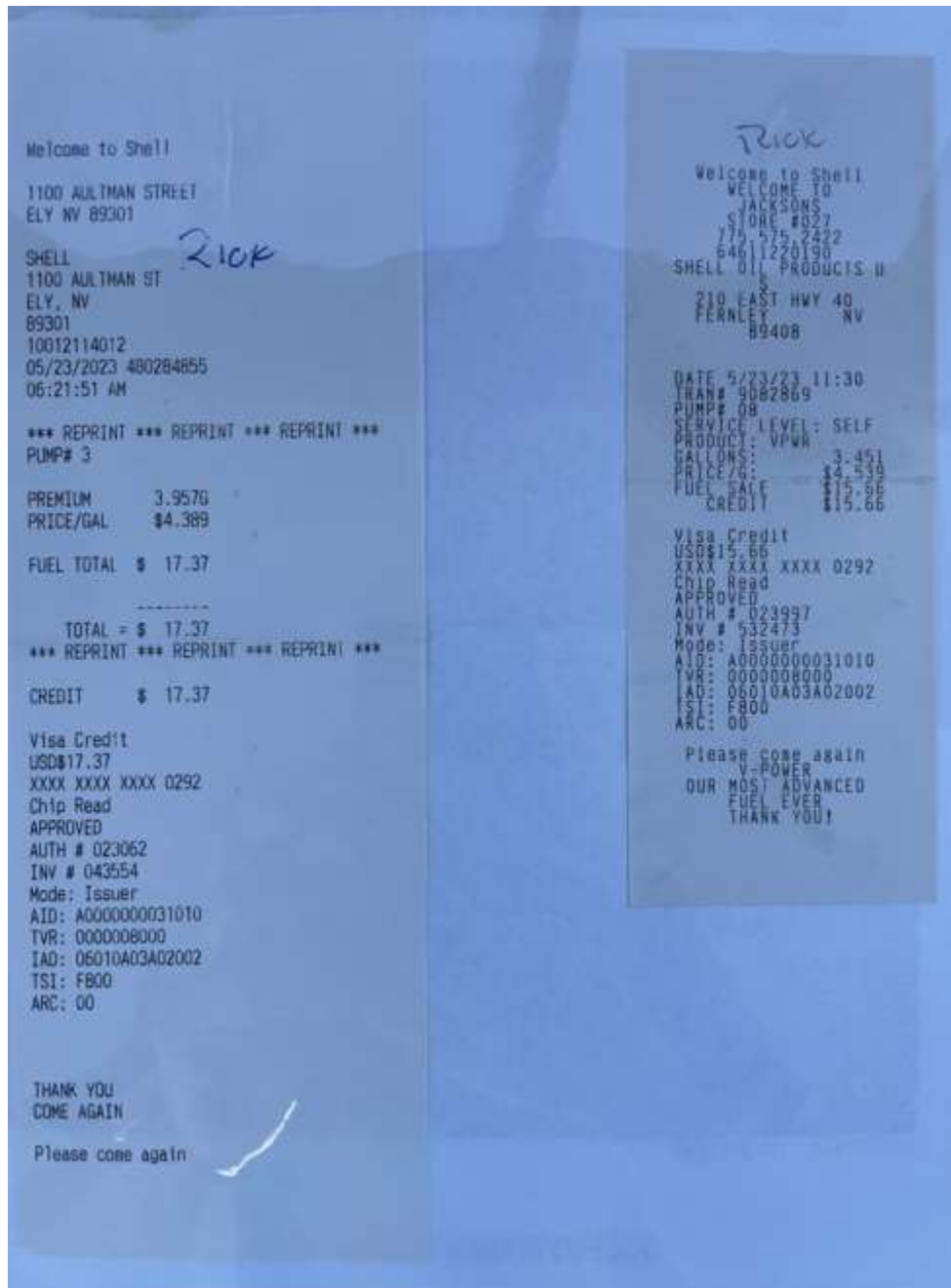
End of Ride #10



39.6077944, -119.2215500

Receipts

Ride #10 – Loneliest Road in America Nevada US50 Ely to Fernley 285 miles



Ride #16 – Bighorn Scenic Byway Wyoming US14 Greybull to Ranchester 80 miles

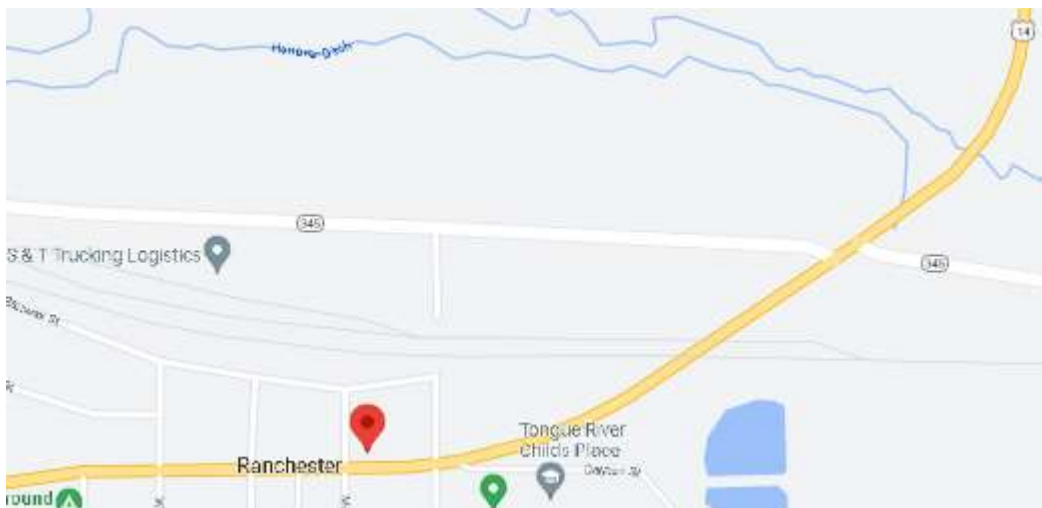


Ride #16 – Bighorn Scenic Byway Wyoming US14 Greybull to Ranchester 80 miles

Start of Ride #16, Ranchester



44.9090500, -107.1621556



Ride #16 – Bighorn Scenic Byway Wyoming US14 Greybull to Ranchester 80 miles

End of Ride #1, Greybull



44.4888000, -108.0529333

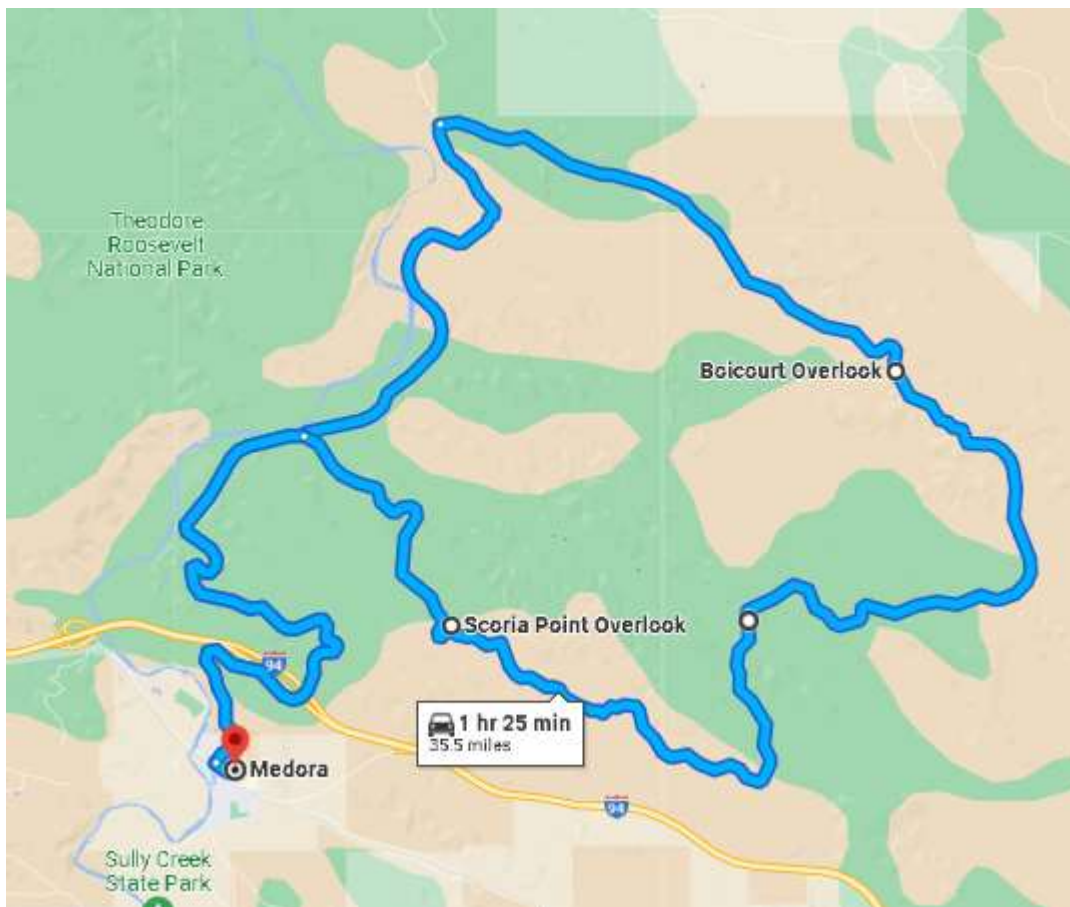


Ride #16 – Bighorn Scenic Byway Wyoming US14 Greybull to Ranchester 80 miles

Receipts



Ride #17 – Theodore Roosevelt National Park Medora North Dakota Park Loop 35 miles



Ride #17 – Theodore Roosevelt National Park Medora North Dakota Park Loop 35 miles

Start of Ride #17, Medora



46.9147972, -103.5277028

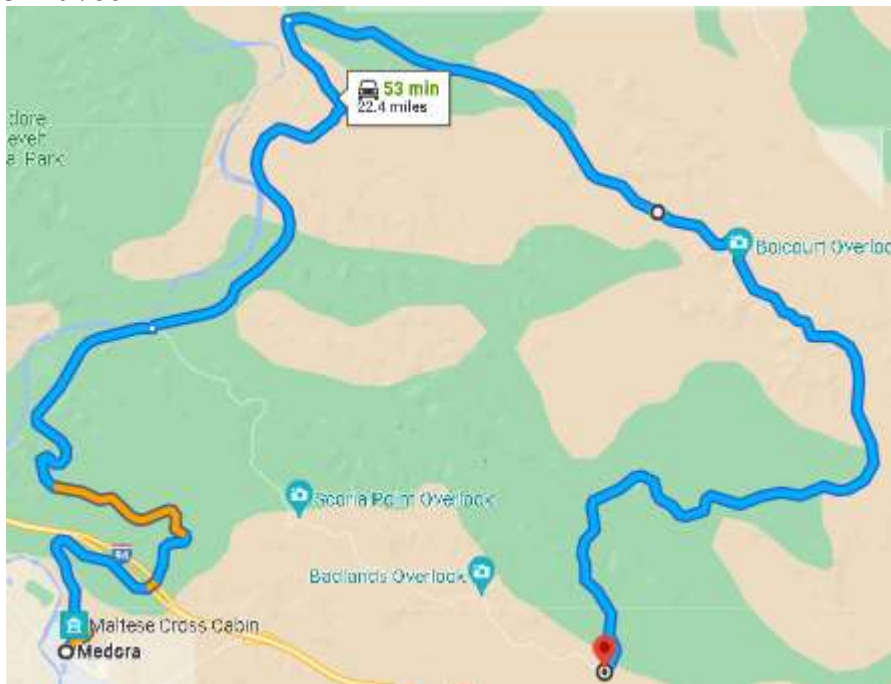


Ride #17 – Theodore Roosevelt National Park Medora North Dakota Park Loop 35 miles

End of Ride #17, Road Closure, Loop was closed, we could only ride 22 miles in, then back out

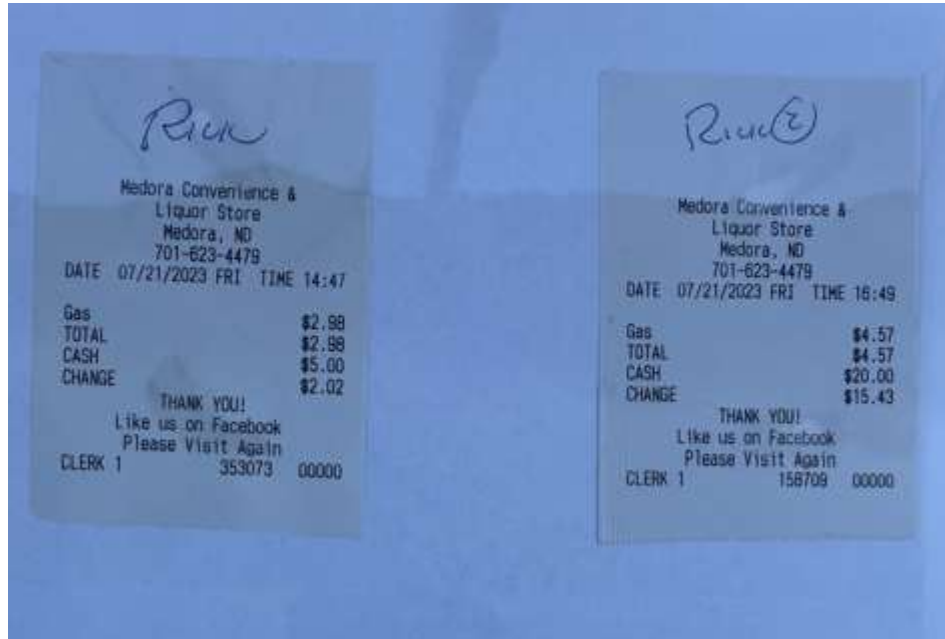


46.9123361, -103.4297861

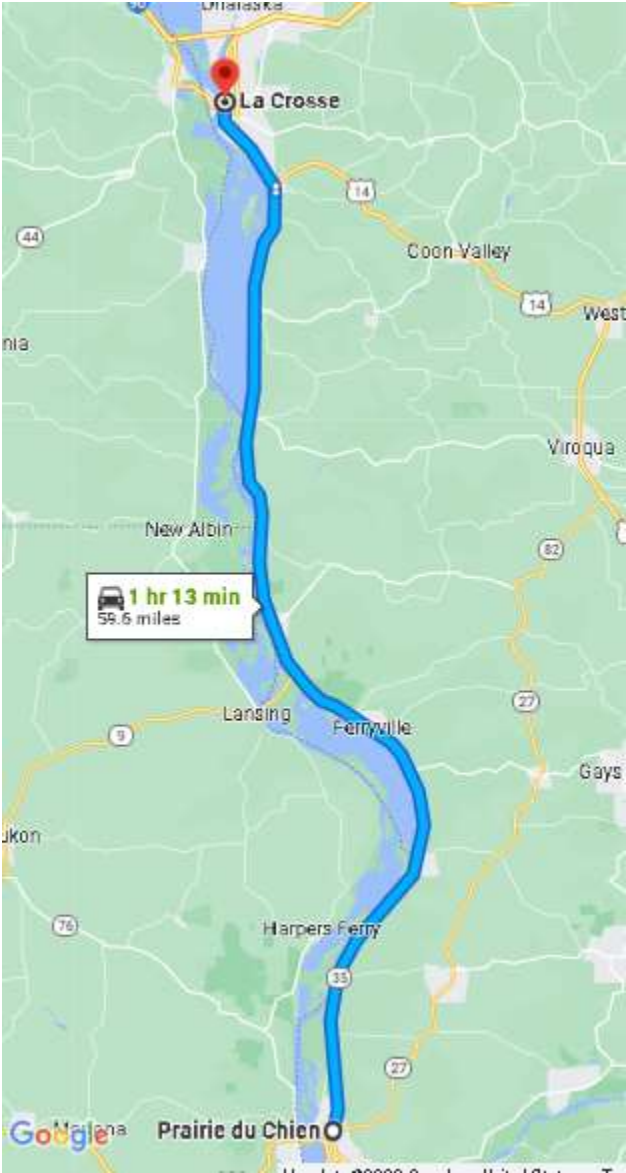


Ride #17 – Theodore Roosevelt National Park Medora North Dakota Park Loop 35 miles

Receipts



Ride #18 – Great River Road Wisconsin WI-35 LaCrosse to Prairie du Chien 63 miles



Ride #18 – Great River Road Wisconsin WI-35 LaCrosse to Prairie du Chien 63 miles

Start of Ride #18, Prairie du Chien



43.0511333 , -91.1464000



Ride #18 – Great River Road Wisconsin WI-35 LaCrosse to Prairie du Chien 63 miles

End of Ride #18, LaCrosse

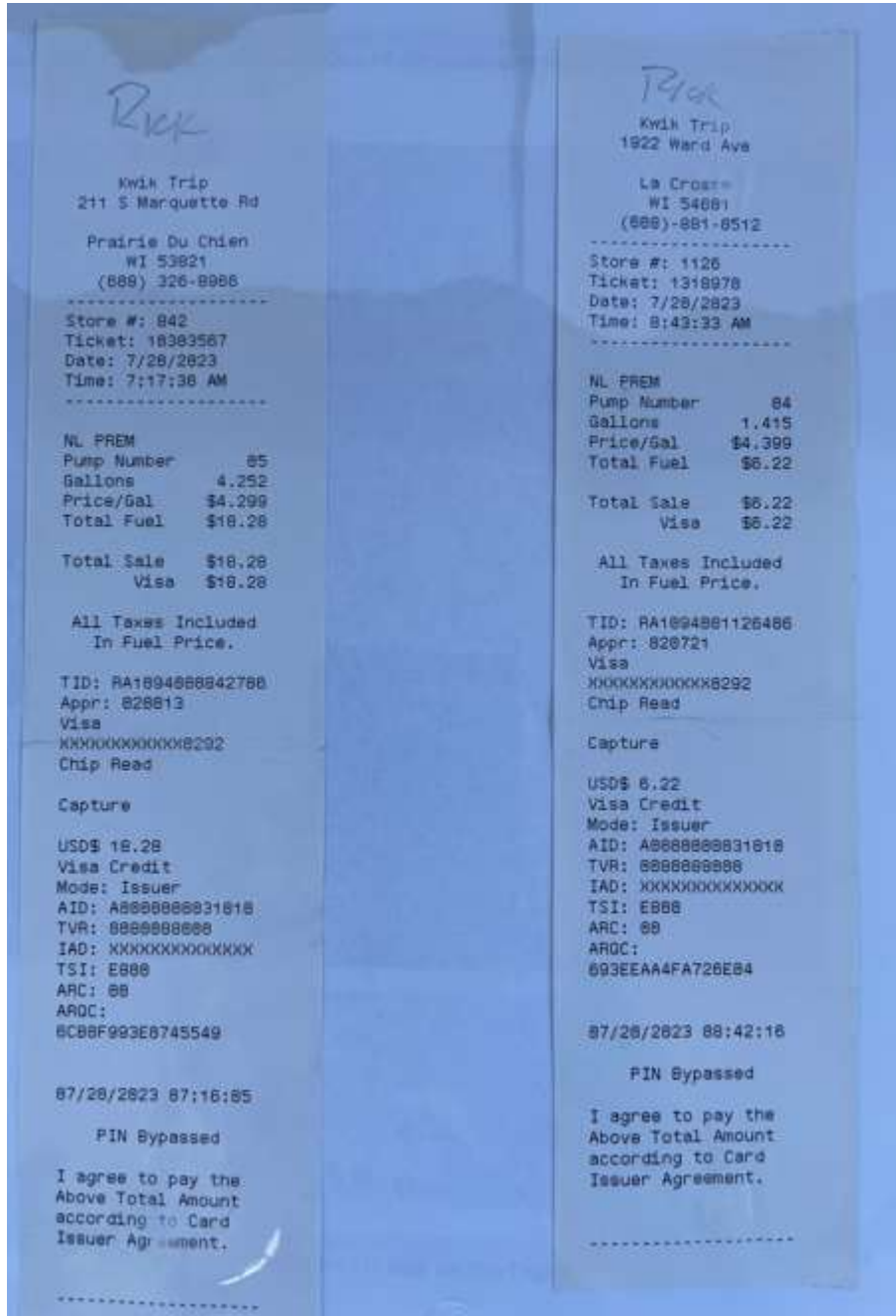


43.8131833, -91.2498472

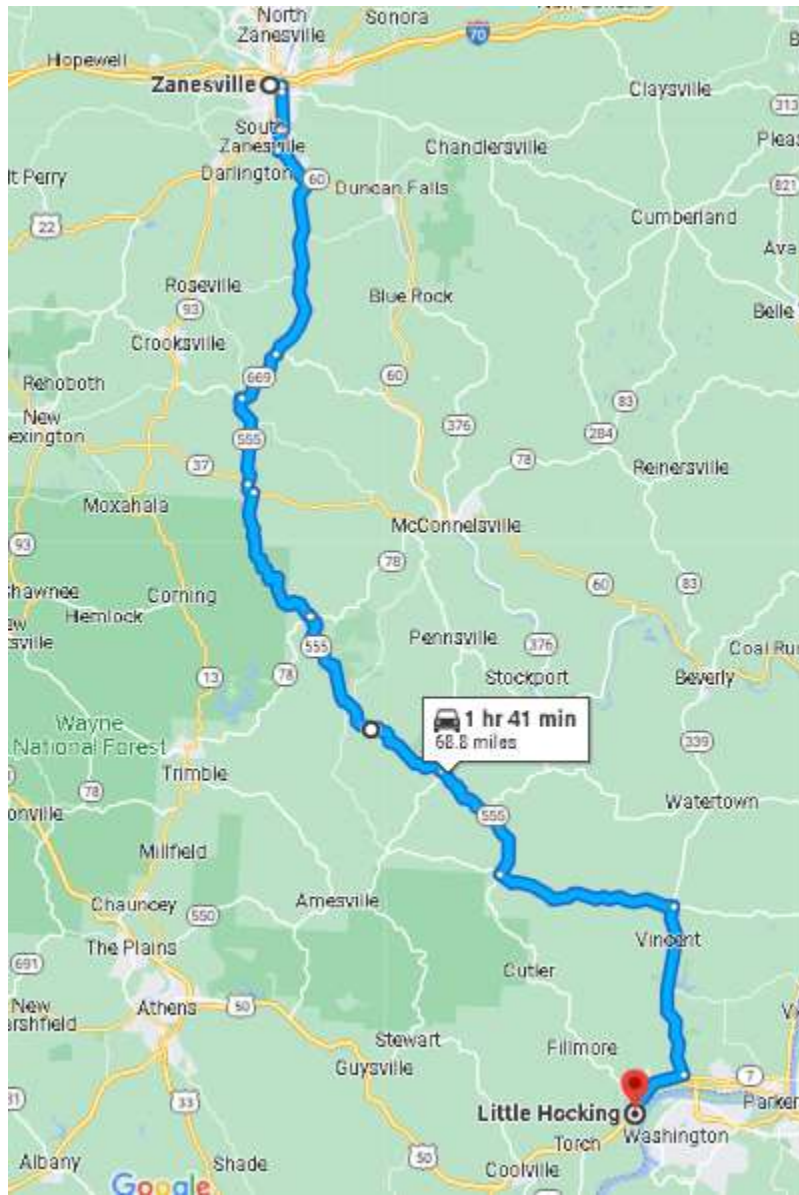


Ride #18 – Great River Road Wisconsin WI-35 LaCrosse to Prairie du Chien 63 miles

Receipts



Ride #19 – Triple Nickel Ohio OH555 Zanesville to Little Hocking 62 miles



Ride #19 – Triple Nickel Ohio OH555 Zanesville to Little Hocking 62 miles

Start of Ride #19, Little Hocking



39.2724111, -81.6919167



Ride #19 – Triple Nickel Ohio OH555 Zanesville to Little Hocking 62 miles

End of Ride #19, Zaneville

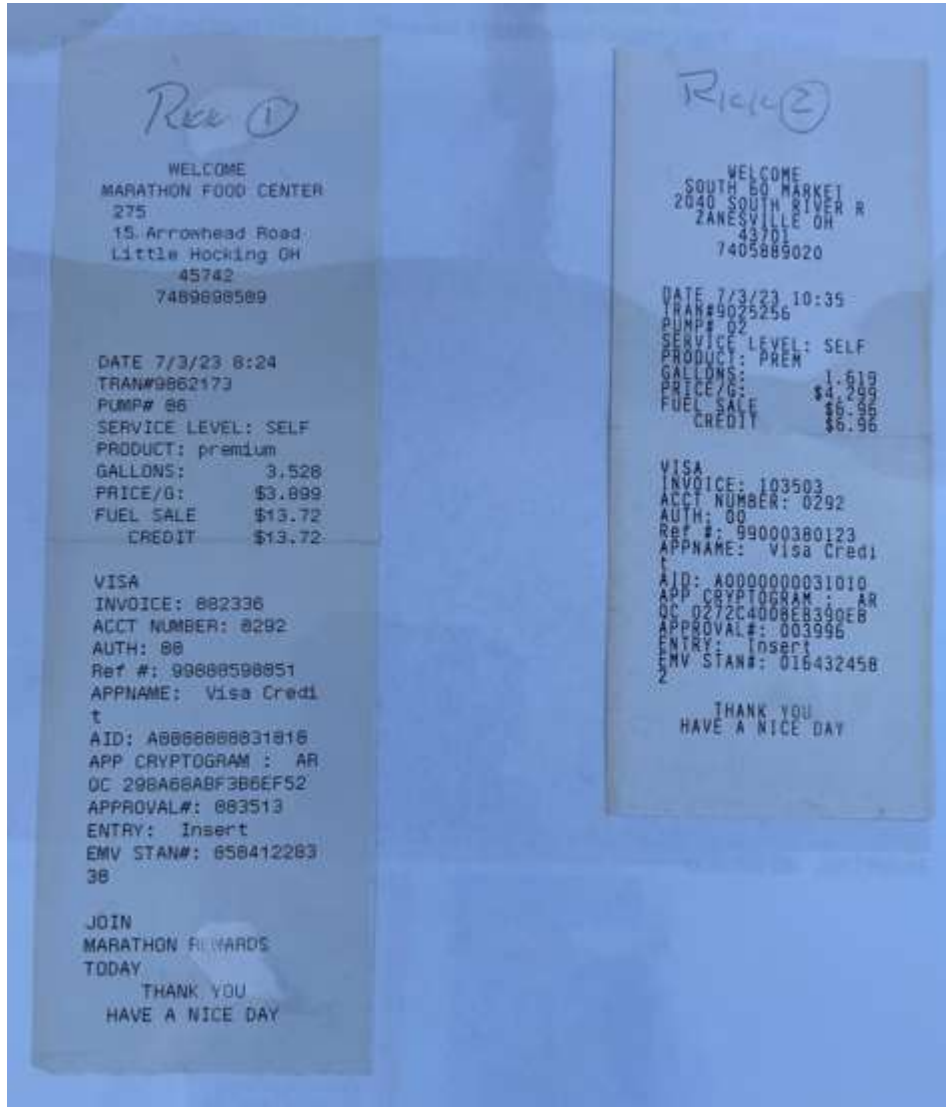


39.9095306, -82.0011833

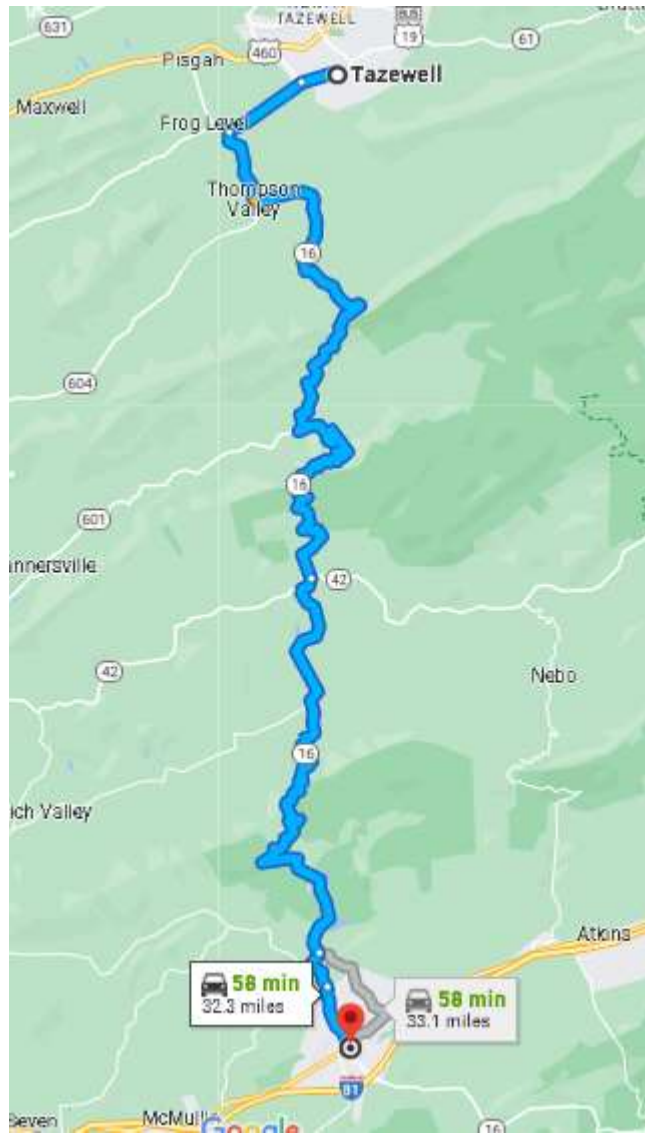


Ride #19 – Triple Nickel Ohio OH555 Zanesville to Little Hocking 62 miles

Receipts



Ride #20 – Back of the Dragon Virginia VA16 Tazewell to Marion 32 miles

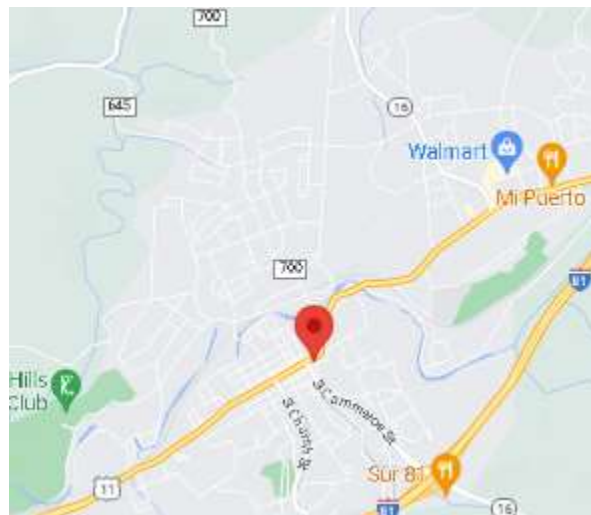


Ride #20 – Back of the Dragon Virginia VA16 Tazewell to Marion 32 miles

Start of Ride #20, Marion



36.8343194, -81.5164278

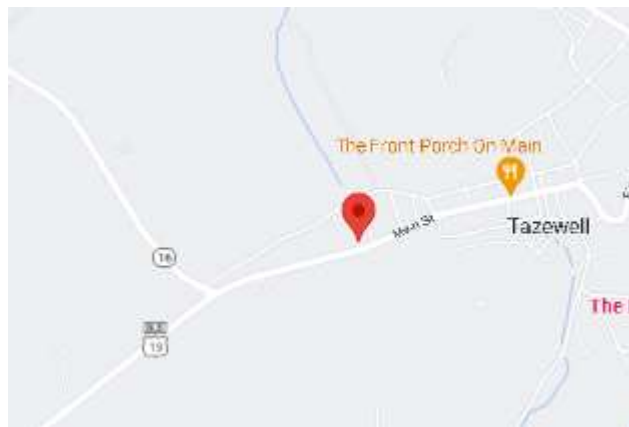


Ride #20 – Back of the Dragon Virginia VA16 Tazewell to Marion 32 miles

End of Ride #20, Tazewell



37.1145139, -81.5268556



Ride #20 – Back of the Dragon Virginia VA16 Tazewell to Marion 32 miles

Receipts

